



THE EQUINE WORLD IS HERE

23 - 26 NOVEMBER 2017 | ASB SHOWGROUNDS

OFFICIAL PROGRAMME



IN PARTNERSHIP WITH



ABOVE & BEYOND



HARRISON LANE
EQUESTRIAN DESIGN AND CONSTRUCTION



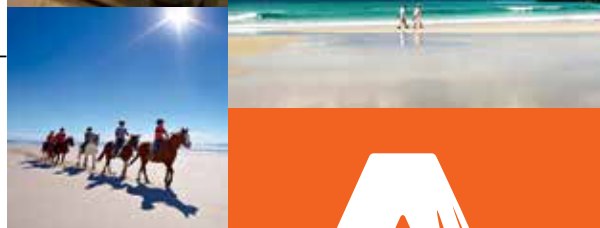


AKA

The Show Never Stops

**The land stops,
and the sea starts.
The boutiques close
and the restaurants open.
The concert ends,
and the nightlife begins.
The curtain comes down,
but the show never stops.**

aucklandnz.com



A
AUCKLAND

MAYORAL MESSAGE

Haere mai

I am delighted to welcome all the equestrian enthusiasts and professionals – and their horses – here to Auckland for EQUITANA.

Equestrian activities are widespread across our region, from our rural industries and communities, to more urban spaces like south Auckland's Ambury Farm and city fringe pony clubs.

Our Karaka Bloodstock auctions attract buyers from around the world and injects millions into the regional economy. Visitors and locals enjoy horse trekking in stunning wild locations like Muriwai, Pakiri, Waiheke or Waiwera, all just a short drive from the city.

Now we welcome more than one hundred horses here to the centre of Auckland for this international equestrian spectacular, an exciting new addition to our diverse annual calendar of sporting, lifestyle and cultural events.

I extend a warm welcome to our international visitors here for EQUITANA. While you are here, please enjoy our renowned hospitality and our region's wonderful natural environment.

Welcome to our place, enjoy your stay and enjoy EQUITANA.

Phil Goff

Mayor of Auckland



ROD LOCKWOOD

KEVIN HANSEN

A MESSAGE FROM OUR EVENT DIRECTORS

Our foray into New Zealand with the inaugural EQUITANA Auckland is an exciting step for us all, and one we know a lot of you have been looking forward to.

On behalf of our team, we welcome you to this very special international event, and one we hope will continue here in alternate years to the popular EQUITANA Melbourne.

EQUITANA is one of the oldest horse festivals in the world. It was founded in Germany, and to date, Melbourne is the only other location it operates in. It is a great honour that we introduce it to New Zealand – right in the heart of this beautiful City of Sails.

It has been Rod's dream to bring EQUITANA across the Tasman and he is proud to have teamed up with Kevin and Sue Hansen to make that happen.

For Kevin, EQUITANA Auckland is another step in showcasing equestrian in a way at an international level this nation rarely sees. He has enjoyed pushing the boundaries and showing New Zealanders that top-flight equestrian sport is not just for competitors, but equally as much as entertainment to be enjoyed and admired.

For him, it is the diversity of EQUITANA that makes it so special – as well as elite competition and incredible night show entertainment, there are educators and displays guaranteed to inspire and entrance.

The night shows really will be something else – from kicking off with Thursday evening's All Star Showcase, to Friday's EQUITANA New Zealand - Open Harrison Lane Jumping Grand Prix and ATEED Dressage Freestyle to Music, Saturday's much-anticipated EquiMana and Sunday afternoon's Equitak Excel Dressage Masterclass with Jonny Hilberath.

We think it will be four totally unforgettable days of breathtaking equestrian entertainment. EQUITANA Auckland is for everyone – from the most passionate and elite of riders to the beginner, supporter, spectator and those who just love beauty and excitement.

We thank ATEED and the City of Auckland for their support and guidance in bringing EQUITANA to Auckland. We also thank the ASB Showgrounds for their wonderful support and our other sponsors who have contributed so much to our inaugural event.

There really is no other event like EQUITANA, so we hope you enjoy your days here. Shop til you drop, absorb the atmosphere, learn from the very best and most of all, plan your return trip to an event that we hope will be enjoyed by Kiwis for many years to come.

Rod Lockwood – Managing Director
Kevin Hansen – Event Director

CONTENTS

WELCOME	3	SIGNING POSTERS	27
STAR PRESENTERS		CORPORATE HOSPITALITY	31
ANDREW NICHOLSON - EVENTING	6	IRT THE WAY OF THE HORSE	32
JONNY HILBERATH - DRESSAGE	7	MOUNTED GAMES	34
JOHN LYONS - HORSEMANSHIP	8	VENUE INFORMATION	36
UP CLOSE AND PERSONAL	9	PRECINCT MAP	37
DAILY FEATURES AND TIMETABLES		EXHIBITION PLAN	38
THURSDAY	12	EXHIBITORS	40
FRIDAY	16	COUPONS	44
SATURDAY	20	INTERNATIONAL EDUCATORS	48
SUNDAY	24	EDUCATOR HUB	51
POLO CHAMPIONSHIPS	26		

TICKET INFORMATION

SUPER TICKET

Full access for all 4 days

Adult \$320 | Child \$280

GENERAL ADMISSION

Single day access, does not include Evening Programme or Equitak Excel Dressage Masterclass with Jonny Hilberath

Adult \$35 | Child/Concession \$25 |

Family (2 Adults + 3 Children) \$90

FULL DAY TICKETS:

THURSDAY

General Admission + EQUITANA All Star Showcase

Adult \$115 | Child/Concession \$85

FRIDAY

General Admission + EQUITANA New Zealand - Open Harrison Lane Jumping Grand Prix and ATEED Dressage Freestyle to Music

Adult \$100 | Child/Concession \$70

SATURDAY

General Admission + EquiMana

Adult \$125 | Child/Concession \$85

SUNDAY

General Admission + Equitak Excel Dressage Masterclass with Jonny Hilberath

Adult \$125 | Child/Concession \$85

Refer to website for fees and charges

Buy tickets online at www.equitanaakl.co.nz or at the gate.

**BUY TICKETS ONLINE TO
AVOID \$5 BOX OFFICE FEE!**

CHARITY PARTNER

CATWALK
NEVER SAY NEVER

A world free from spinal cord injury paralysis

Scientists agree unanimously, injured nerve cells in the spinal cord can be regenerated and "paralysis" following spinal cord injury will become a thing of the past.

However researchers cannot make life-changing discoveries without you. As the charity partner of EQUITANA we appreciate your support that is helping provide funding for innovative projects, to acquire cutting-edge technology and to drive pioneering exploration initiatives to find a cure for spinal cord injury.



@EQUITANAACL

#EQAKL



/equitanaakl

#THEEQUINEWORLDISHERE



EQUITANA AUCKLAND 2017 | PAGE 4

NEW RANGE ROVER VELAR

DON'T WORRY, IT'S FRIENDLY.



ABOVE & BEYOND



With its bold purposeful stance and foil stamped front grille, the New Range Rover Velar may appear rather intimidating. But remember, it's still a Land Rover with legendary go anywhere capability. Over unfriendly terrain, it will always be your best friend. Available now, with prices starting from \$134,900 plus on road costs.

Book a test drive at your local retailer today.

landrover.co.nz

STAR PRESENTERS

ANDREW NICHOLSON - EVENTING

Andrew Nicholson is lauded as one of the world's greatest eventers.

He has competed at six Olympic Games, seven World Equestrian Games, had five wins at the Burghley Horse Trials and this year won the Badminton Horse Trials aboard the Spanish-bred Nereo.

The achievements of the former number one are commendable. Nicholson can lay claim to gold and bronze medals at World Championships and is a three-time Olympic medalist. He and team-mate Sir Mark Todd were the first Kiwis in any sport to compete at six Olympic Games.

Nicholson grew up in Kihikihi before moving to the UK in 1980 to groom for Todd and pursue a career in eventing. Four years later, both were on the New Zealand team at the 1984 Olympic Games in Los Angeles. He has arguably made the most incredible sporting comeback of all time. In 2015, he was almost paralysed after a fall during an event, but was back in the saddle within months.

He is also a history-maker as the first rider to have won a four-star event in three consecutive years when he triumphed with Avebury at the Burghley Horse Trials in 2014.

Nicholson is an engaging speaker and when he talks horses, everyone listens. Germany has been quick to utilise those talents and he is currently working closely with the leaders in world equestrian.

Nicholson lives in Wiltshire, in the UK, with his wife Wiggy and two youngest children Zach and Lily.

WHERE TO SEE ME!

THURSDAY

IRT The Way Of The Horse, Horse Selections

Premier Indoor Arena | 11:15am

IRT The Way Of The Horse, Challenge 1

Premier Indoor Arena | 1:00 pm

Ultra•Mox Eventing Masterclass

Premier Indoor Arena | 4:00 pm

EQUITANA All Star Showcase

Premier Indoor Arena 7:00 pm

FRIDAY

IRT The Way Of The Horse, Challenge 2

Premier Indoor Arena 9:30 am

EQUITANA New Zealand Open

Kubota Express Eventing

Kubota Outdoor Arena | 3:15 pm

SATURDAY

IRT The Way Of The Horse, Challenge 3

Premier Indoor Arena | 10:45 am

Star Presenters Forum

Classroom | 12:00 pm

Up Close and Personal...

Logan Campbell Centre | 1:00pm

Education Session

Mitavite Arena | 3:00 pm

SUNDAY

IRT The Way Of The Horse Final

Premier Indoor Arena | 11:45 am

Signing Session

Main Foyer | 3:00 pm





JONNY HILBERATH - DRESSAGE

World renowned German Gold Medal Dressage coach, Jonny Hilberath is the highly anticipated Dressage Star Presenter for EQUITANA Auckland.

He is the current trainer of the world's top riders and is the secret weapon of the unstoppable Gold Medal winning Rio Olympic German Dressage Team including:

- Isabel Werth
- Kristina Broring-Sprehe
- Dorothee Schneider
- Sonke Rothernberger

Along with many others riders, all of whom credit their incredible success to his guidance! However he is the first to admit that while a team may look unbeatable on paper, it is all about bringing that into the ring.

Hilberath is undoubtedly one of the best coaches in the world and is bringing his Olympic winning approach to his two- hour masterclass at EQUITANA.

This will be your only opportunity to learn from the Master of German Dressage as he takes you through the everyday techniques he uses to train the world's best combinations, giving them the winning edge.

Hilberath has trained many horses to Grand Prix level and last competed in 2010. He doesn't believe in harsh or complicated training methods, preferring instead to work with the horse, to get the animal on side.

Key to his methods are the basics – get those right and he says the rest will be easier to achieve. A harmonious connection between horse and rider will be rewarded many times over.

He lives in Abbendorf, in northern Germany with his Swedish wife Anika where they run a successful equestrian business.

He has a close affiliation with New Zealand - dressage rider Andrea Bank was based with him for some years. However, this will be his first visit to New Zealand, and one he is looking forward to immensely.

WHERE TO SEE ME!

THURSDAY

IRT The Way Of The Horse, Horse Selections

Premier Indoor Arena | 11:15am

IRT The Way Of The Horse, Challenge 1

Premier Indoor Arena | 1:00 pm

EQUITANA All Star Showcase

Premier Indoor Arena | 7:00 pm

FRIDAY

IRT The Way Of The Horse, Challenge 2

Premier Indoor Arena | 9:30 am

Education Session

Demonstration Arena | 12:15 pm

SATURDAY

IRT The Way Of The Horse, Challenge 3

Premier Indoor Arena | 10:45 am

Star Presenters Forum

Classroom | 12:00 pm

Signing Session

Main Foyer | 3:00 pm

Education Session

Mitavite Arena | 4:00 pm

SUNDAY

Kubota Dressage Grand Prix

Premier Indoor Arena | 9:00 am

IRT The Way Of The Horse Final

Premier Indoor Arena | 11:45 am

Equitak Excel Dressage Masterclass

Premier Indoor Arena | 3:00 pm

STAR PRESENTERS



WHERE TO SEE ME!

THURSDAY

IRT The Way Of The Horse, Horse Selections

Premier Indoor Arena | 11:15am

IRT The Way Of The Horse, Challenge 1

Premier Indoor Arena | 1:00 pm

Signing Session

Main Foyer | 3:00pm

Education Session

Demonstration Arena | 4:00 pm

FRIDAY

IRT The Way Of The Horse, Challenge 2

Premier Indoor Arena | 9:30 am

Education Session

Mitavite Arena | 3:00 pm

SATURDAY

IRT The Way Of The Horse, Challenge 3

Premier Indoor Arena | 10:45 am

Star Presenters Forum

Classroom | 12:00 pm

Education Session

Demonstration Arena | 3:00 pm

Western Demonstration

Premier Indoor Arena | 5:30 pm

SUNDAY

IRT The Way Of The Horse Final

Premier Indoor Arena | 11:45 am

Education Session

Demonstration Arena | 3:00 pm

JOHN LYONS - HORSEMANSHIP

John Lyons is aptly called "America's most trusted horseman".

Those who follow natural horsemanship are well versed on his talents and ability to change a horse's behaviour, attitude and attention, improve ground manners, riding and performance. His focus is on the relationship between horse and rider, nurturing it and strengthening it to get the very best from both.

Lyons began training others in 1980 drawing on the knowledge gained during his lifetime of riding. The key to his success is work ethic, coupled with a desire to improve and a love of helping others by sharing what he has learnt. It is a talent he has passed onto his own children and grandchildren. Riding with family is his favourite pastime these days, but he gets plenty of satisfaction in seeing a student light up when they accomplish what they want with their horse.

Lyons was also a keen competitor, but gave that away in 1981. He has since written many books and with his wife Jody has produced numerous training DVDs. They live on Dream Ranch in Colorado where they host clinics, expos, demonstrations and run programmes.

This will not be his first visit to New Zealand – he and his father had a whistle-stop tour in the early 1980s. He fell in love with the country and is looking forward to visiting again, this time with Jody.



@EQUITANAACL

#EQAKL



/equitanaacl

#THEEQUINEWORLDISHERE



LOGAN CAMPBELL CENTRE

UP CLOSE AND PERSONAL WITH...

This is your opportunity to hear from two of the most inspiring horse-people in world as they share their incredible life story with you. Andrew Nicholson and Sandi Simons come from different backgrounds but both have equally impressive stories, which involve overcoming challenges, life changing experiences and of course, horses.

Take some time out of your day for one hour on Friday and Saturday, to immerse yourself in their captivating tales and get up close and personal to these amazingly motivating people.

SANDI SIMONS **FRIDAY, 1:00PM**

A true inspiration to not only women in the equine industry but the world over, Sandi Simons has experienced more than her fair share of trials and tribulations.

Sandi has always found comfort in the knowledge that no matter how tough her life was, she always had horses waiting for her.

Sandi has helped thousands of women across Australia and the US regain their confidence in their horse riding and their lives. She is truly an incredibly motivating woman who has used her horse knowledge to help people to not only improve their riding, but improve their lives.



ANDREW NICHOLSON **SATURDAY, 1:00PM**

New Zealand's eventing hero Andrew Nicholson is returning home to be part of EQUITANA Auckland.

Here is your chance to learn about the many challenges and triumphs that Andrew has gone through over his illustrious career, including six time Olympic representation, coming back from a fall that nearly paralysed him, his recent Badminton win and plenty more.



GET SOCIAL AND WIN!

 @equitanakl

 /equitanaakl

#EQAkl #THEEQUINEWORLDISHERE

Most creative photo each day using the official hashtags will be featured on the EQUITANA Auckland social media accounts



WHAT'S ON THURSDAY 23 NOVEMBER



Welcome to EQUITANA Auckland. Today you can watch the very best in the Ultra•Mox Eventing Masterclass with Andrew Nicholson or the Showjumping Masterclass with Rod Brown. If horsemanship is your thing, then don't miss our IRT The Way of the Horse (TWOTH) horse selections in the Premier Indoor Arena. Looking for a laugh? Catch our Couples Challenge on the Kubota Outdoor Arena, and of course, there's the All Star Showcase tonight to wrap up a spectacular first day at EQUITANA Auckland.

IRT WELCOME STAKES



Olympians, World Cup finalists, World Equestrian Games representatives and more line up to contest the inaugural IRT Welcome Stakes jumping crown.

Lex Peddie has been tasked with producing a course that challenges, entertains and eventually finds a winner. Riders will need to be on their game to clear the narrow 1.5m jumps in a purpose built Premier Indoor Arena. Couple that with an electric atmosphere and close crowds and you've got a recipe for edge-of-your seat entertainment from some of Australasia's best.

9:00 AM, PREMIER INDOOR ARENA



COUPLES CHALLENGE

Don't miss the fun and antics as four couples from different disciplines tackle a series of everyday tasks most equestrians undertake when going to a horse show. Against the clock they will need to complete the course with the least penalties and the most laughs. Get ready for some side-splitting action.

11:30 AM, KUBOTA OUTDOOR ARENA

JUMPING TRAINING CLINIC WITH ROD BROWN

Rod Brown holds a very special place in the echelons of Australian showjumping.

An Olympian, World Equestrian Games representative and hugely successful competitor himself, Brown now focuses on coaching, with daughter Jess, who is competing in the New Zealand Open, following very firmly in his footsteps.

When Brown speaks, people listen, with some of the very best from both eventing and showjumping training with him. His training clinic will be something quite special that all levels will be able to learn from.

2:30 PM, KUBOTA OUTDOOR ARENA





WHAT'S ON
THURSDAY 23 NOVEMBER

ULTRA-MOX EVENTING MASTERCLASS WITH ANDREW NICHOLSON

ULTRA-MOX

Attending a masterclass with Andrew Nicholson is a chance to be in the presence of eventing royalty.

The former world number one, Olympian and World Equestrian Games medalist is sought-after the world over for his insight and advice. Riders will tell you walking a cross country course with Nicholson brings a new way of looking at a course, and clearly it is one that works.

Nicholson is a history-maker and a master of the sport. His eye for a horse has always been keen and the steadfast support of a small group of owners speaks volumes.

During his masterclass, Nicholson will show you how he works and trains his horses, and the reasons behind that. He will take you through an event – from the dressage to the cross country and showjumping – and give an insight rarely seen.

4:00 PM, PREMIER INDOOR ARENA



U17 WORLD MOUNTED GAMES TEAM CHAMPIONSHIPS



This year, EQUITANA Auckland will play host to this terrific international competition, run in conjunction with the World Mounted Games Association. Today will feature heats 3 & 4. For more information see page 34!

9:00 AM & 4:00PM KUBOTA OUTDOOR ARENA

IRT THE WAY OF THE HORSE - HORSE SELECTIONS



Our competitors in IRT The Way Of The Horse have a unique and very special gift. Over the next four days they will take a horse from wild to willing. Each trainer will select a horse on Thursday and spend just an hour a day training with them, under the watchful eye of our expert judges. Make sure you don't miss seeing the trainers select their partners and explain why they chose to work with them for this challenge.

11:15 AM, PREMIER INDOOR ARENA



WHAT'S ON
THURSDAY 23 NOVEMBER

EVENING ENTERTAINMENT

***SUPER TICKET OR THURSDAY DAY TICKET
ONLY**

EQUITANA ALL STAR SHOWCASE

The All Star Showcase will kick EQUITANA Auckland off with a bang. It's the opening day of this inaugural New Zealand event, but EQUITANA is most certainly an internationally-celebrated affair, so expect the best. Producer Sandi Simons has brought together the stars to ensure your first night is both educational and inspirational.

Imagine for a moment you could have a snap-shot of all the very best of EQUITANA Auckland on the opening day, well, that's just what Simons has put together for the All Star Showcase.

The three hour programme includes Star Presenters, eventer Andrew Nicholson, dressage trainer Jonny Hilberath and horsemanship specialist John Lyons, alongside EQUITANA Auckland educators, reining champion David Simons and ranch rider Todd McCormack, as well as a little taste of Tina Fagen's much-anticipated EquiMana.

"We have a little from everything in the All Star Showcase," says Simons.


Included in the programme are miniatures, showing, dressage, The Way of The Horse, carriage driving, mounted games, music and more.

This is an entertainment showcase for the whole family that will leave you spellbound.

Begins at 7pm on the Premier Indoor Arena



THURSDAY 23 NOVEMBER

TIME	PREMIER INDOOR ARENA	KUBOTA OUTDOOR ARENA	TIME	MITAVITE ARENA 1	DEMONSTRATION ARENA	SUMMIT SADDLERY ARENA	CLASSROOM
9:00	IRT Welcome to EQUITANA: Jumping 1.40m	U17 World Mounted Games Team Championships Heat 2	9:00				
9:15							
9:30							
9:45			NZ Mounted Rifles Charitable Trust - History & function today	Phil Webb: An Introduction to Cutting	NZ Show Horse Council turnout demonstration	Dr. Leigh De Clifford: Management of the Equine athlete	
10:00							
10:15							
10:30							
10:45				Larissa Bilston: The importance of minerals & vitamins			
11:00			11:00	David Jones-Parry: Saddle fitting principles	Brett Parbery: Dressage Demystified	Dr Luke Wells-Smith: Advances in Laminitis	
11:15	IRT - The Way of The Horse (TWOTH) Horse Selections		11:15				
11:30		Couples Challenge	11:30				
11:45							
12:00			Russell Higgins: The Art of Ponying, Lead & Ride	Wayne Hipsley: Assessing movement	Laura Daly: Lifestyle properties & stable design		
12:15							
12:30						Sue Parker: The Equine Body Therapy S.T.A.R.T. program	
12:45							
1:00	IRT The Way of The Horse (TWOTH): Challenge I		1:00	BREAK			
1:15							
1:30							
1:45							
2:00		Jumping Masterclass presented by Rod Brown	2:00	Breed Village Group Display	Mark Kenzig: Introduction to Showing	Jason Hill: Equestrian Rider Fitness	Gretel Webber: The impact of diet on equine behaviour
2:15							
2:30				2:30	Breed Village Group Display		
2:45			2:45				
3:00			3:00	Breed Village Group Display	David Simons: Developing the young Reining horse		
3:15			3:15				
3:30			3:30			Nikita Stowers: Feeding your horse to reach its potential	Carole Herder: Discover your Hoof Care options
3:45			3:45				
4:00	Ultra-Mox Eventing Masterclass presented by Andrew Nicholson	U17 World Mounted Games Team Championships Heat 3	4:00	TWOTH Contestant Emily Weibel	John Lyons: Simple & effective cues		
4:15							
4:30				4:30		Fenella Grigsby: Anatomy & biomechanics	Lindsay Cook: Empowering riders using hypnotherapy
4:45				4:45			
5:00				5:00	EXHIBITION CLOSES AT 5.30PM		
5:15							
5:30				WHAT ELSE IS ON!			
5:45			Signing session with the Wilson Sisters			2:00pm	Main Foyer
6:00			Signing session with John Lyons			3:00pm	Main Foyer
6:15			SUPER TICKET AND DAY TICKET ONLY				
6:30							
6:45							
7:00							
7:30							
8:00							
8:30							
9:00							
9:30							
10:00							

WHAT'S ON FRIDAY 24 NOVEMBER



It's another fantastic day at EQUITANA Auckland. Catch some exciting express eventing and a little of the fast and furious U17 World Mounted Games Team Championships. Australian showjumping legend Rod Brown is here to share his wealth of knowledge and don't miss tonight's Evening Entertainment – the EQUITANA New Zealand - Open Harrison Lane Grand Prix and ATEED Dressage Freestyle to Music. It's a day, and night the whole family can enjoy.

EQUITANA NEW ZEALAND OPEN KUBOTA EXPRESS EVENTING



Combine dressage to music, add a little cross country and round it out with fast-as-you like showjumping, and you've got express eventing.

"It's completely different to anything else," says EQUITANA Auckland Event Director Kevin Hansen.

Riders will complete a four minute dressage test to music, make a quick change of gear, complete a John Nicholson-designed cross country course then straight into a Lex Peddie-designed showjumping course.

Twenty of New Zealand's best onshore eventers are expected for the event. It will be one competition not to miss!

3:15PM, KUBOTA OUTDOOR ARENA



EQUITANA CONNEXION CHALLENGE



A brand new EQUITANA competition, the ConneXion Challenge will highlight the harmony and partnership between horse and rider, incorporating all disciplines from dressage and showjumping, to liberty and horsemanship.

This is a timed event judged on agility, obstacles, precision and performance. A must see for all horse lovers, this has never been seen before in New Zealand. This is sure to be a crowd favourite, so make sure you include this as a must-see and cheer for your favourite combination!

3:30PM, PREMIER INDOOR ARENA



@EQUITANAACL #EQAKL



/equitanaacl #THEEQUINEWORLDISHERE



WHAT'S ON
FRIDAY 24 NOVEMBER

HARRISON LANE BREED SHOWCASE



The best of the breeds battle it out for the title of Breed Showcase Champion. This showcase allows you the opportunity to see the variety of horses at EQUITANA Auckland's PUREPINE Breed Village.

Horses will be scored by each judge independently, in accordance to their breed standards and given a mark out of 10. The top scores will then proceed to a final, where breed will be pitted against breed with the judges deciding on the final best in show.

2:00PM, KUBOTA OUTDOOR ARENA



INTERNATIONAL THOROUGHBRED RETIREMENT SHOW HORSE TRAINING FEATURE PRESENTED BY MARK KENZIG

Join one of Australia's leading Show Horse trainers, Mark Kenzig, as he takes you through the processes of show preparation, producing and training for shows. Mark is a Royal Listed Show Horse Council Judge and Equestrian Australia National Saddle Horse Judge and will be giving you the secrets to showing success.

12:00 PM, PREMIER INDOOR ARENA

DRESSAGE FAMILIARISATION

Want a chance to see how the top dressage riders prepare for big competition? Friday afternoon's dressage familiarisation is the perfect opportunity. Riders will have microphones to allow you to experience what it is like to prepare horses in an electric environment, before they take centre stage in tonight's EQUITANA New Zealand Open ATEED Dressage Freestyle to Music.

1:30PM, PREMIER INDOOR ARENA



WHAT'S ON
FRIDAY 24 NOVEMBER

EQUITANA NEW ZEALAND - OPEN **HARRISON LANE JUMPING GRAND PRIX &** **ATEED DRESSAGE FREESTYLE TO MUSIC**

EVENING
ENTERTAINMENT

***SUPER TICKET OR FRIDAY DAY TICKET ONLY**



The aim of the inaugural EQUITANA New Zealand Open is simple, gather the best combinations from both sides of the Tasman, challenge them in the toughest possible way, and provide a world-class platform for them to showcase their skills.

That's just what we've done for the jumping and dressage crowns.

Friday night's EQUITANA New Zealand Open features top-flight jumping Grand Prix and dressage freestyle to music.

There is an elite list of combinations taking part in the Harrison Lane Jumping Grand Prix, including three-time Australian Senior Showjumping Champion Jamie Kermond and his compatriot Jess Brown, who was shortlisted for the 2016 Rio Olympics. They will be taking on some of New Zealand's finest, in Olympians Maurice Beaton, Katie Laurie and Clarke Johnstone, as well as the current holder of the Olympic Cup Lily Tootill and a raft of others.

It's no different in the ATEED Dressage Freestyle to Music where former Australian National Dressage Champions Rozzie Ryan and Brett Parbery go head-to-head with Rio Olympian Julie Brougham, New Zealand's first-ever FEI World Cup dressage finalist Wendi Williamson, current New Zealand National Dressage Champion John Thompson and others.

Begins at 7pm on the Premier Indoor Arena



FRIDAY 24 NOVEMBER

TIME	PREMIER INDOOR ARENA	KUBOTA OUTDOOR ARENA	TIME	MITAVITE ARENA 1	DEMONSTRATION ARENA	SUMMIT SADDLERY ARENA	CLASSROOM			
9:00			9:00							
9:15			9:15							
9:30	IRT The Way of The Horse (TWOTH): Challenge II		9:30							
9:45		Jumping Masterclass presented by Rod Brown	9:45							
10:00			10:00	Jane & Ken Dromgool: Safety as a function of your Relationship	Session topic refer website	NZ Show Horse Council turnout demonstration	Antoinette Foster: The horse's gut			
10:15			10:15							
10:30		10:30								
10:45			10:45			Dr. Sara Bagheri: Veterinary Chiro-practic&Perfor-mance				
11:00			11:00	Todd McCormick: Introduction to Ranch Riding			Dr Luke Wells-Smith: Caudel Heel Pain			
11:15		U17 World Mounted Games Team Championships Heat 4	11:15		Peter Horobin: Biomechanics & Saddelfit					
11:30	11:30									
11:45	11:45									
12:00	International Thoroughbred Retirement Show Horse Training Feature Presented by Mark Kenzig		12:00	Wilson Sisters "Saving the Snowy Brumbies"		Georgia Worth: Equine Dental Care	Jenny Paterson: Horses eat grass, don't they?			
12:15			12:15							
12:30		12:30								
12:45		12:45		Jonny Hilberath: Dressage Training Session						
1:00			1:00	BREAK						
1:15		1:15								
1:30		1:30								
1:45			1:45							
2:00	Dressage Familiarisation	Harrison Lane Breed Showcase	2:00	Sandi Simons: Nervous rider? So am I	Breed Village Group Display		Tanja Mitton: A crash course in Confidence			
2:15			2:15							
2:30			2:30		Breed Village Group Display	Amanda Edwards: Effective wound care for horses				
2:45			2:45							
3:00			3:00	John Lyons: Improve Control	Breed Village Group Display		Wayne Hipsley: How to become a Show Horse judge			
3:15			3:15							
3:30	EQUITANA ConneXion Challenge	Kubota New Zealand Open Express Eventing	3:30			Larissa Bilston: The importance of minerals & vitamins				
3:45										
4:00				Mark Kenzig: Introduction to Showing	Tui Teka: Establishing body control from the ground up		Dr Leigh De Clifford: Ulcers/Performance Nutrition			
4:15			4:15							
4:30			4:30			Thorsten Kaiser: Barefoot vs Unshod, the differences				
4:45			4:45							
5:00			5:00	EXHIBITION CLOSES AT 5.30PM						
5:15										
5:30				WHAT ELSE IS ON!						
5:45				Signing session with the Wilson Sisters			2:00pm	Main Foyer		
6:00			Up Close & Personal with Sandi Simons			1:00pm	Logan Campbell Centre			
6:15										
6:30										
6:45										
7:00	EQUITANA New Zealand Open - Harrison Lane Jumping Grand Prix & ATEED Dressage Freestyle to Music							SUPER TICKET AND DAY TICKET ONLY		
7:30								*Subject to change without notice		
8:00								*Please check website for updates: www.equitanaaki.co.nz		
8:30								*Correct as of 10/10/2017		
9:00										
9:30										
10:00								EQUITANA AUCKLAND 2017 PAGE 17		

SUPER TICKET AND DAY TICKET ONLY

*Subject to change without notice

*Please check website for updates: www.equitanaaki.co.nz

*Correct as of 10/10/2017

WHAT'S ON SATURDAY 25 NOVEMBER



Spread out the programme and make sure you fit as much as you can into today before tonight's spectacular – EquiMana. IRT The Way Of The Horse moves into day three today, so expect to see some fantastic transformations from our four combinations. The U17 World Mounted Games Team Championships reaches its crescendo with both the A and B finals. Polo makes its debut, there's lots to see in the PUREPINE Breed Village, some exciting showjumping as well as Off the Track Thoroughbred Show Horse Series.

EQUITANA NEW ZEALAND OPEN LAND ROVER POLO CHAMPIONSHIPS



The international polo competition will comprise of an afternoon match on Saturday and Sunday. This is the perfect way to get your dose of exhilarating polo entertainment over the weekend of EQUITANA Auckland. This will be an equine spectacle guaranteed to keep you enthralled until the very last second of each match. For more information see page 26.

3:30PM, PREMIER INDOOR ARENA



CITY OF SAILS CLASSIC WINNING ROUND - JUMPING 1.45M

Australia and New Zealand's best riders will take on a 1.45m course designed by Lex Peddie. Participants will be whittled down to the top 10 where the competition will culminate in a fast and furious last round jump-off against the clock. Riders will drop their scores going into that final round where all start with a clean slate. The combination with the least penalties will ride off with the spoils of victory.

9:00AM, PREMIER INDOOR ARENA



CARRIAGE DRIVING

Carriage driving is not for the faint-hearted, and yet it attracts drivers as young as 10 right through to those who are 80-plus. Expect the arena to light up with some heart-stopping racing at EQUITANA Auckland.

There will be obstacle driving against the clock which will see the daring slice corners and take risks just to come home that smidgen ahead of the rest of the pack. An exciting event for the whole family to enjoy.

11:45AM, KUBOTA OUTDOOR ARENA





WHAT'S ON SATURDAY 25 NOVEMBER

MINITANA

EQUITANA Auckland is proud to host 'Minitana', the ultimate showcase of miniature horses. You can enjoy getting up close with these cuties and watching a number of carriage driving, in-hand jumping and youth displays. All classes will have full commentary on placings so it will also be an educational opportunity for all. Don't forget to visit the Auckland Miniature Horse Club in the PUREPINE Breed Village.

4:15PM, KUBOTA OUTDOOR ARENA



OFF THE TRACK THOROUGHBRED SHOW HORSE SERIES

The glitz and glamour of show horse will be on show as EQUITANA Auckland invites the top off-the-track horse and rider combinations to present for judging. A panel of judges will assess horses on their conformation, soundness, manners, paces and presentation under saddle.

1:00PM, PREMIER INDOOR ARENA

STAR PRESENTERS FORUM

EQUITANA Auckland's Star Presenters will come together for an open discussion on all things equine in this exclusive forum! This is your opportunity to hear from our experts in their respective disciplines and learn what common principles guide their horse training methods.

Join Andrew Nicholson, Jonny Hilberath, John Lyons and a surprise guest or two in this intimate hour long Q&A session.

12:00PM, CLASSROOM

WESTERN DEMONSTRATION FEATURING JOHN LYONS

Join Horsemanship Star Presenter John Lyons and International Educator and Reining rider David Simons for EQUITANA Auckland's Western Demonstration. Watch these expert trainers take you through tips and techniques for training that are applicable to every horse and rider. From the fundamentals to the finer points of both horsemanship and western riding, this session can help take your riding to the next level.

5:30PM, PREMIER INDOOR ARENA



WHAT'S ON
SATURDAY 25 NOVEMBER

EQUIMANA

Lights and music will electrify the arena, bringing to life the colourful costumes and tremendous talent that will make EquiMana.

From the spine-tingling opening haka performance, to the passion and flair of the Spanish horse and dancers, it will be a captivating display of horse and human unity.

Tina Fagan's affinity with animals is hugely respected across New Zealand's equestrian community, but she's bringing even more to EQUITANA Auckland's Saturday night show – EquiMana. Combine her unique talents with those of her professional dancing partner Marcus Ashwell, and you have something truly spectacular in the making.

In choreographing EquiMana, Fagan has brought together performers, created the music, prepared the horses and perfected all the special effects that will come with it. "There is a lot that goes on behind big shows like this," she says. "It will be emotive and very much grounded here in New Zealand. It is the spirit of our country and what horses mean to us."

Begins at 7pm on the Premier Indoor Arena

EVENING ENTERTAINMENT

*SUPER TICKET OR SATURDAY DAY TICKET
ONLY



SATURDAY 25 NOVEMBER

TIME	PREMIER INDOOR ARENA	KUBOTA OUTDOOR ARENA	TIME	MITAVITE ARENA 1	DEMONSTRATION ARENA	SUMMIT SADDLERY ARENA	CLASSROOM	
9:00	City of Sails Classic Winning Round - 1.45m	U17 World Mounted Games Team Championships B Final	9:00					
9:15								
9:30			Breed Village Group Display					
9:45								
10:00			10:00	Breed Village Group Display	Russell Higgins: Liberty	Thorsten Kaiser: Conformation flaws and hooves	Lindsay Cook: Empowering riders using hypnotherapy	
10:15			10:15					
10:30			10:30	Breed Village Group Display				
10:45	IRT The Way of The Horse (TWOTH) Challenge III		10:45					
11:00			11:00		Rozzie Ryan: Preparation for flying changes & pirouettes	Jason Hill: Rider functional movement & performance	Vera Payne: Fast & Effective equine pain relief	
11:15			11:15	Jane & Ken Dromgool: Get safe				
11:30			11:30					
11:45			11:45					
12:00		Carriage Driving	12:00		Phil Webb: Introduction to Cutting		STAR PRESENTERS FORUM	
12:15			12:15	Mitavite education presentation		Nikita Stowers: Gastric ulceration gastroscopy demonstration		
12:30			12:30					
12:45			12:45					
1:00	Off the Track Thoroughbred Show Horse Series	U17 World Mounted Games Team Championships A Final	1:00				STAR PRESENTERS SIGNING	
1:15				1:15	BREAK			
1:30				1:30				
1:45				1:45				
2:00			2:00	TWOTH Contestant: Sharna Little	David Simons: What is needed for a competitive reining horse		Jenny Paterson: Horse diets & safety	
2:15			2:15					Peter Horobin: Biomechanics & Saddleftit
2:30		2:30						
2:45		2:45						
3:00		3:00	Andrew Nicholson Eventing Training	John Lyons: Problem Solving		Sue Parker: The Equine Body Therapy S.T.A.R.T. program		
3:15		3:15					Carole Herder: Protect your barefoot horse	
3:30	Land Rover EQUITANA New Zealand Open Polo Championships		3:30					
3:45			3:45		Sandi Simons: Controlling your fear			
4:00			4:00	Johnny Hilberath: Dressage Training			Fenella Grigsby: Low level Laser Therapy	
4:15			4:15			Dr. Leigh De Clifford: Wound management		
4:30		Minitana	4:30					
4:45			4:45					
5:00			5:00	EXHIBITION CLOSING AT 5.30PM				
5:15								
5:30	Western Demonstration featuring John Lyons		WHAT ELSE IS ON!					
5:45			Signing session with the Wilson Sisters			2:00pm	Main Foyer	
6:00			Signing session with Jonny Hilberath			3:00pm	Main Foyer	
6:15			Up Close & Personal with Andrew Nicholson			1:00pm	Logan Campbell Centre	
6:30								
6:45								
7:00	EquiMana Showcase		SUPER TICKET AND DAY TICKET ONLY					
7:30			*Subject to change without notice					
8:00			*Please check website for updates: www.equitanaakl.co.nz					
8:30			*Correct as of 10/10/2017					
9:00								
9:30								
10:00								

EQUITANA AUCKLAND 2017 | PAGE 21

WHAT'S ON SUNDAY 26 NOVEMBER



The final day of EQUITANA Auckland will finish with a bang! The Kubota Dressage Grand Prix is a perfect start to your day, especially if you are attending the Equitak Excel Dressage Masterclass with Jonny Hilberath later in the afternoon. The fast and furious EQUITANA New Zealand Open Land Rover Polo Championships winner will be decided, along with the New Zealand Show Horse Council competitions throughout the day. IRT The Way Of The Horse journey draws to a close with the final challenge of the competition, and the winner announced at the end of the challenge. This will also be your last chance to catch the education sessions, so make sure you're organised and plan your last day of EQUITANA Auckland.

KUBOTA DRESSAGE GRAND PRIX



EQUITANA Auckland is offering the richest dressage prize pool in New Zealand this year, so expect to see the very best lining up. The Kubota Dressage Grand Prix features former Olympians, World Cup finalists, national title holders and more. It brings a taste of international dressage competition rarely seen in New Zealand.

9:00AM, PREMIER INDOOR ARENA



PONY CLUB FANCY DRESS

Let the fun begin! Taking a step back from the elite competitions, EQUITANA Auckland is pleased to present its frantic and fabulous Fancy Dress. Enjoy watching riders from Pony Clubs all across New Zealand as they masquerade in costumes and are critiqued by a mystery judge who will be announced before the crowd.

So get your cameras ready and make sure you come out and support these great young riders as they show off their amazing costumes.

11:00AM, KUBOTA OUTDOOR ARENA

WHAT'S ON SUNDAY 26 NOVEMBER

HARRISON LANE SHOW HORSE COUNCIL HUNTER HORSE AND PONY COMPETITION



HARRISON LANE

Come and see these magnificent horse and rider combinations put themselves under the judges microscope to be crowned champion in their respective sections. This will be the most glamorous equine event at EQUITANA Auckland and will leave audiences in awe at the grace and beauty of these magnificent horses.

9:15AM, KUBOTA OUTDOOR ARENA

IRT THE WAY OF THE HORSE FINAL



Four days of competition all comes down to this, the IRT The Way of The Horse final.

Our judges have been watching our four competitors closely and today they will do an obstacle course and their last challenge. The champion will be decided on how well the horse has been trained, the methods used and the connection created at the end of this incredible challenge. Also crowned will be the winning team – will it be New Zealand or Australia?

11:45AM, PREMIER INDOOR ARENA



EQUITANA MELBOURNE

15 - 18 NOVEMBER 2018 MELBOURNE SHOWGROUNDS



EQUITANA & Horseware

**SUPER TICKET
CHRISTMAS PRESALE**

For the first time ever, EQUITANA Melbourne and Horseware Australia are offering you the chance to secure the first release of Super Tickets for EQUITANA Melbourne 2018, just in time for Christmas!

ON SALE December 2017

Sign-up to the e-news and follow the EQUITANA Australia Facebook page for updates.

The perfect Christmas present for yourself or the ultimate EQUITANA-fanatic to secure a spot at EQUITANA Melbourne 2018.



WWW.EQUITANA.COM.AU

WHAT'S ON
SUNDAY 26 NOVEMBER

EQUITAK EXCEL DRESSAGE MASTERCLASS WITH JONNY HILBERATH

**EQUITAK
EXCEL**

What a treat to have the great Jonny Hilberath at EQUITANA Auckland to give a masterclass. Hilberath is the Dressage Star Presenter. He's the man behind the German team's spectacular gold medal win at the Rio Olympic Games, and he continues to work with some of the best in the world. Those lucky enough to get tickets to the masterclass will leave spellbound and inspired.

Jonny Hilberath's three hour masterclass will work on developing a young horse right through to working with some of the country's top grand prix riders. These sessions are broken into a handful of mini clinics with Hilberath going through the different levels of the training scale. They're also hugely interactive with questions taken from the floor at the end.

Hilberath does not believe in harsh or complicated training methods. "I never like to work against the animal," he says. "I have experienced a lot in my life, and made mistakes, and the horse has taught me much. It pays so much more if you take time and have the way of the horse on your side. Then the body is able to do certain moves easily and freely. When you spend more time on the basics, then in the end you win so much more time."

He seeks out elasticity, roundness and bounciness in the horses.

"That is what finally gives you control over a horse and his body. If you can establish that for the proper training and exercise with movement, then you will get it in the ring, that is what makes the quality, expression and lightness."

Hilberath's masterclass will be enjoyed by all levels of riders – whether you are just starting out in dressage, or have spent a lifetime pursuing your passion.

Begins at 2:30pm on the Premier Indoor Arena

**EVENING
ENTERTAINMENT**

***SUPER TICKET OR SATURDAY DAY TICKET
ONLY**



TIME	PREMIER INDOOR ARENA	KUBOTA OUTDOOR ARENA	TIME	MITAVITE	DEMONSTRATION ARENA	SUMMIT SADDLERY ARENA	CLASSROOM			
9:00	Kubota Dressage Grand Prix		9:00							
9:15			9:15							
9:30		Harrison Lane Show Horse Council - Hunter Horse & Hunter Pony Competition	9:30	NZ Mounted Rifles Charitable Trust - History & function today						
9:45			9:45							
10:00			10:00		Todd McCormick: Introduction to Ranch Riding	Dr. Sara Bagheri: Train Harder, Recover Quicker	Session topic refer website			
10:15		10:15								
10:30			10:30							
10:45			10:45	David Jones-Parry: Saddle fitting principles			Amanda Edwards: Horse First Aid			
11:00		Pony Club Fancy Dress	11:00		Tanja Mitton: It takes two to Tango	Georgia Worth: Understand your horses dental needs				
11:15			11:15							
11:30			11:30							
11:45	IRT The Way of The Horse (TWOTH) FINAL		11:45							
12:00			12:00	Wilson Sisters "Dandy the mountain pony"	Jody Hartstone: Improve your Dressage success	Jason Hill: Equestrian Rider Fitness	Session topic refer website			
12:15			12:15							
12:30			12:30							
12:45			12:45							
1:00		Land Rover EQUITANA New Zealand Open Polo Championships	1:00	BREAK						
1:15			1:15							
1:30			1:30							
1:45			1:45							
2:00				2:00		Antoinette Foster: Feed for Strength	Vera Payne: Home user pain relief	Dr. Leigh De Clifford: Foal growth / skeletal		
2:15			2:15	Mitavite Kids Activity Clinic						
2:30			2:30							
2:45			2:45							
3:00		New Zealand Show Horse Council - Show Horse & Show Pony Competition	3:00		John Lyons: Control aspects		Amanda Wilson: Jumping theory for every rider			
3:15			3:15							
3:30			3:30	TWOTH Contestant Brett Davey		Gretel Webber: Feeding your horse on Age & Stage				
3:45			3:45							
4:00	Equitak Excel Dressage Masterclass presented by Jonny Hilberath		4:00	EXHIBITION CLOSES AT 4.00PM						
4:15			WHAT ELSE IS ON!							
4:30			Signing session with the Wilson Sisters			2:00pm	Main Foyer			
4:45			Signing session with Andrew Nicholson			3:00pm	Main Foyer			
5:00										
5:15										

SUPER TICKET AND DAY TICKET ONLY

*Subject to change without notice

*Please check website for updates: www.equitanaaakl.co.nz

*Correct as of 10/10/2017

POLO CHAMPIONSHIPS



ABOVE & BEYOND

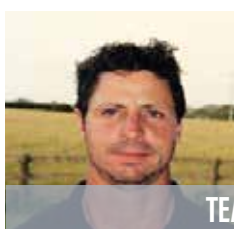


The best from the sport of kings will converge on Auckland as EQUITANA New Zealand Open Land Rover Polo Championships takes centre stage. Witness speed, skill and grace as players provide a showcase as part of the EQUITANA New Zealand Open.

The Land Rover International Polo competition will comprise of an afternoon match on Saturday and Sunday. This is the perfect way to get your dose of exhilarating polo entertainment over the weekend of EQUITANA Auckland. This will be an equine spectacle guaranteed to keep you enthralled until the very last second of each match.

The horses involved in the tournament are proudly provided by Ainsley Polo. Kel Ainsley and brother Ross not only play the sport at the highest level, they also breed top horses for competition. There isn't a significant polo tournament anywhere in the world that hasn't had an Ainsley polo pony take part including the International Cartier Day at Guards Polo Club in the UK, the Argentinean Open in Buenos Aires, and New Zealand's own Polo Open.

The vast knowledge and international success that Kel and Ross have accumulated over the years make Ainsley Polo the best place to begin or further your polo involvement. Visit www.ainsleypolo.com to find out how you can get involved today!



TEAM 1

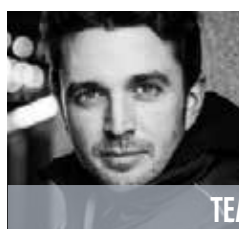
KEL AINSLEY

One half of the infamous Ainsley Polo Operation. Kel is a 3 goal professional player, who just got off the plane from China having been representing Australia in the Beijing International Polo Open. He has been playing for over 20 years, all over the world, watch for his swift neck shots.



DAN WORKER

Dan is a 1 goal professional player, from another of New Zealand's polo families; polo has taken his brothers and himself to play in the UK and Australia. Having just become a father for the first time he will be keen to impress his family.



TEAM 2

JOHN MARTIN

Ainsley Polo's resident head coach John, is a 3 goal professional. Originally from the UK, John has played in the US and Australia as well as in his home country, where he won the coveted Queens Cup and has played with both Prince William and Harry so he will bring some royal elegance to the field today.



ALEX RICHARDSON

Alex another resident Kiwi has a 1 goal handicap and has taken part in the prestigious Saville cup and been in the winning line up. Having just come off his 3 month long honeymoon in Europe, we will have to make sure he remembers which side of the road (arena) to ride on!



TEAM 3

WILL HUNT

A natural horseman, Will is a 4 goal player and comes from a polo legacy with both his brothers and cousins being some of New Zealand's top players, having represented his home country on many occasions, he now prefers to swing a hammer more than a polo stick, but his natural ability is hard to beat on the field.



GUSTAVO PECKERLE

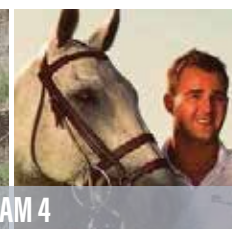
Gus a 0 goal player, is of Argentine heritage, but grew up in Brunei as his father looked after the Sultan's string of polo ponies, having been involved with the sport since he was a child, he has played both in the UK and NZ.



TEAM 4

MARCUS BERESFORD

Marcus is a 2 goal player, originating from Ireland; you might recognize Marcus for his starring role in a Head and Shoulders advert a few years ago. This celebrity status and his oozing Irish Charm have taken him to play on the fields of England, Argentina and Australia, but will the luck of the Irish be with him today!



MATT BAYLEY

An established patron and player, Matt a born and bred Kiwi, has played in both the New Zealand Open and won the Saville Cup. A strong 2 goal player, polo has taken Matt to the fields of England, Hawaii and Australia. He is a great player to watch on the field but look out for his big hits!



AINSLEY POLO

SEE THE EQUITANA NEW ZEALAND OPEN

LAND ROVER POLO CHAMPIONSHIPS

SATURDAY

3:30 PM, PREMIER INDOOR ARENA

SUNDAY

12:45 PM, KUBOTA OUTDOOR ARENA

DONT FORGET TO GET YOUR SPECIAL EDITION EQUITANA STAR POSTERS SIGNED >>>



EQUITANA
AUCKLAND EQ AKL

23 - 26 NOVEMBER 2017 | ASB SHOWGROUNDS



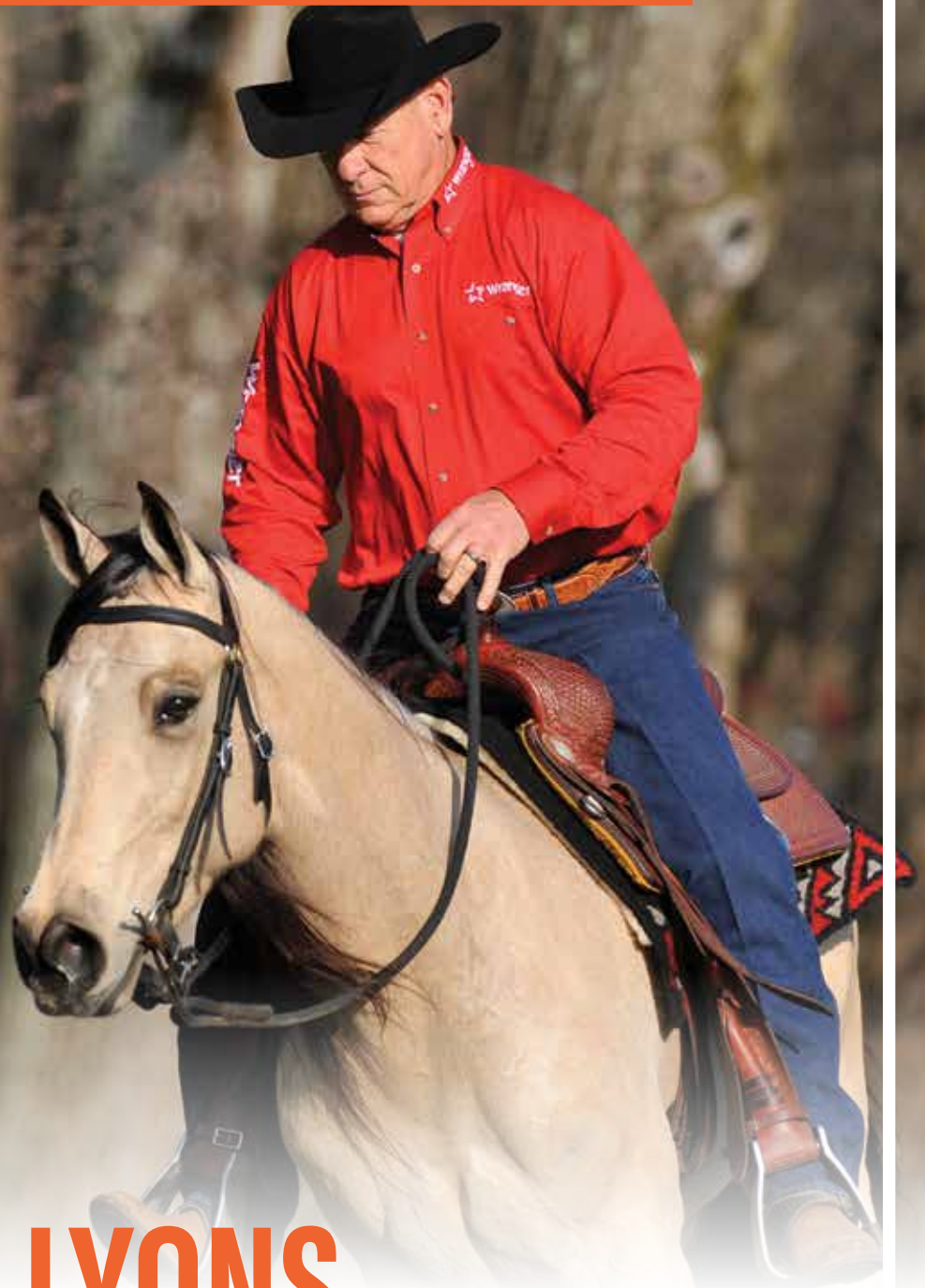
ANDREW NICHOLSON

EVENTING STAR PRESENTER



EQUITANA
AUCKLAND EQ
AKL

23 - 26 NOVEMBER 2017 | ASB SHOWGROUNDS



JOHN LYONS

WESTERN STAR PRESENTER



EQUITANA
AUCKLAND EQ
AKL

23 - 26 NOVEMBER 2017 | ASB SHOWGROUNDS



JONNY HILBERATH

DRESSAGE STAR PRESENTER



EQUITANA
AUCKLAND EQ AKL

23 - 26 NOVEMBER 2017 | ASB SHOWGROUNDS



THE WILSON SISTERS

AMANDA | VICKI | KELLY



CORPORATE HOSPITALITY

THE BEST WAY TO SEE IT ALL

There is just one way to enjoy the very best of EQUITANA Auckland if you like to be surrounded by good food, wine and company.

Corporate packages are the perfect way to host your clients, colleagues and friends at EQUITANA Auckland.

Seated at your own front row table for six, you will receive a sumptuous three course meal and gorgeous wine and beer, all while enjoying some of the world's best equestrian talent.

EQUITANA Auckland has corporate packages available for each of the three nights, as well as Sunday afternoon's entertainment – this is a truly special opportunity to be hosted in a unique setting in VIP style.

Each day has its feature event – from Thursday night's All Stars Showcase, to Friday's EQUITANA New Zealand - Open Harrison Lane Jumping Grand Prix and ATEED Dressage Freestyle to Music, Saturday's EquiMana and Sunday's Equitak Excel Dressage Masterclass with Jonny Hilberath.

So dress in your finery and be part of what promises to be one of the highlights of the social scene in Auckland this year.

**TO BOOK VISIT:
WWW.EQUITANAAKL.CO.NZ**

**TICKETS AVAILABLE FOR JUST \$320 PER
PERSON OR \$1,800 PER TABLE OF SIX**

IRT THE WAY OF THE HORSE



It's huge in Australia, and now IRT The Way Of The Horse makes its debut at EQUITANA Auckland. Watch and learn from the best trainers from New Zealand and Australia as they battle it out for the prestigious title in this educational horse starting competition.

EQUITANA Auckland has invited four top trainers – two each from New Zealand and Australia – to go head to head demonstrating their different training methods to showcase gentle ways of starting young horses.

Each contestant is celebrated for their horsemanship talents and you will get to see their every step as they take a horse from wild to willing over the four days of EQUITANA Auckland.

Trainers will select a horse on Thursday and have an hour each day to work with it – all simultaneously in round pens in front of the crowd. Contestants will be wearing microphones allowing you to hear the reasoning behind their highly personal and very specialised methods.

On the final day, the trainers will present their horse to the crowd and judges, as well as completing an obstacle course. It is then up to the judges to decide who has demonstrated the most effective and sympathetic training methods.

The Way Of The Horse was created in 2005 by the team at EQUITANA Australia to showcase a kind and caring way to start a young horse ensuring a willing and happy riding partner. While each trainer has their own methods, they all have that same underlying ethos.

We have put together four of the finest from New Zealand and Australia. Who will take it out, and which country will earn bragging rights for the next two years?

Make sure you don't miss any of the action.



HORSES PROUDLY PROVIDED BY DELTA HOLSTEINERS

Delta Holstein Stud pride themselves in breeding kind and reliable horses, and co-owners Andrew Care and Judith Lines are very excited to be supplying horses for IRT The Way of The Horse.

The Pukekawa Stud has been producing horses for around 20 years – just one or two a year in the early days before building up to 10-15 now.

While the three-year-old horses they will bring to EQUITANA Auckland for TWOTH have never been handled, they have been around humans most of their lives. Holsteiners are known for their kindness and blend the calmness and athletic ability of the warmblood with the sharpness of the thoroughbred.



PRESENTED DAILY IN THE PREMIER INDOOR ARENA:

THURSDAY

11:15 AM - HORSE SELECTIONS

1:00 PM - CHALLENGE 1

FRIDAY

9:30 AM - CHALLENGE 2

SATURDAY

10:45 AM - CHALLENGE 3

SUNDAY

11:45 AM - FINAL

TEAM NEW ZEALAND



TUI TEKA

Tui Tekā grew up on the remote East Coast, where he rode to school on horseback and spent his weekends taming wild horses.

Not much has changed for this very talented horseman, as he still spends his days working with horses – albeit some of the best bred in New Zealand. It's a passion that comes from deep within and is intrinsically in his make-up.

EDUCATION SESSION:

FRIDAY, 3:45 PM | DEMONSTRATION ARENA

EMILY WEIBEL

Horses have been a way of life for as long as Emily Weibel can remember and she can't wait to test her talents in IRT The Way Of The Horse at the inaugural EQUITANA Auckland.

Her childhood was spent on a remote high country farm in North Canterbury where horses were both utilitarian and entertainment.

For Weibel, the key is balance, rhythm and feel as a base of communication.

EDUCATION SESSION:

THURSDAY, 4:00 PM | MITAVITE ARENA

TEAM AUSTRALIA



SHARNA LITTLE

Sharna Little was riding long before she was walking. The 29-year-old from Tamworth in New South Wales has carved out a solid occupation as a horsebreaker with her own business. She has followed a family tradition in successfully competing in cutting, camp drafting and barrel racing. While she's never been involved in The Way Of The Horse before, she has done plenty of other challenges, which she figures will stand her in good stead.

EDUCATION SESSION:

SATURDAY, 2:00 PM | MITAVITE ARENA

BRETT DAVEY

Brett Davey comes from Australian showjumping royalty but he's paved his way in the world of dressage with partner Andrea Bank.

Davey is a big believer in establishing trust and respect very early in any relationship with a horse, and so far that's been a winner. He's looking forward to showcasing his training methods at EQUITANA Auckland.

EDUCATION SESSION:

SUNDAY, 3:15 PM | MITAVITE ARENA

MOUNTED GAMES



NEW ZEALAND



AUSTRALIA



ENGLAND



SCOTLAND



CANADA



UNITED STATES



WALES



IRELAND

UNDER 17 WORLD MOUNTED GAMES TEAM CHAMPIONSHIPS

New Zealand's rising young Mounted Games stars will have plenty on their plate as they seek to win the Under 17 World Team Championships.

It's a strong team and they head into the event confident they'll do their country proud. New Zealand will join their peers from Australia, Canada, Ireland, Scotland, Wales and the United States, all who will be trying to dethrone defending champions England.

All of the New Zealand team riders have won New Zealand titles with some having represented the nation at top international events offshore.

It's a real coup for the New Zealand Mounted Games Association to be hosting the event for the very first time, and plenty has gone on behind the scenes to ensure the visitors have top ponies to compete on, with up to 80 being sourced.

The U17 World Mounted Games Team Championships are one of six top-flight international mounted games events held each year.

The NZMGA will host their guests at the Papatoetoe Pony Club, with everyone being transported daily to the ASB Showgrounds for the competition.

The event will actually run over eight days – teams arrived in mid-November and have had two days training to get used to their borrowed mounts at the pony club grounds.



**PRESENTED ON THE KUBOTA OUTDOOR
ARENA:**

THURSDAY

9:00 AM - HEAT 2

4:00 PM - HEAT 3

FRIDAY

11:15 AM - HEAT 4

SATURDAY

9:00 AM - B FINAL

1:00 PM - A FINAL



DEFENDING CHAMPIONS!

Former English trainer Bradley Stamp knows what it takes to win the U17 world title.

He's pulled it off back-to-back in 2015 and 2016, but won't be in New Zealand chasing a hat-trick. "It really is New Zealand's to lose," he says, "with them being on their own ponies and everyone else riding borrowed horses."

That said, it was Stamp's English team who made history when they won the 2015 title in the United States – riding borrowed ponies.

"For me, winning that title in the United States was quite special," he said. "They were quite a young group and did so well."

A multi winner of world titles, Stamp and partner Stavroulla Laghos are now training the Austrian national teams, but he still rates the English team to do well.

"New Zealand has a massive advantage riding their own horses, it will come down to matching the right horse with the right rider for the visitors."

TEAM NEW ZEALAND

COACH

AMIE BENTALL

Age: 26

Background: Started doing mounted games at Pony Club at aged nine, learned about the Mounted Games Association at 15 and never looked back.

Best results: NZ Pairs Championship with Sky Notter

NZ representation: 2008-2013 including a member of the World Team Championship in 2013

TEAM

OLIVIA BROOKS-HORE

Age: 15

Experience: Involved with mounted games for six years

Best results: New Zealand Open Team Title 2017

NZ representation: Under 17 World Team Championship 2015, Nations Cup 2017

Horse details: Hone Heke

EMMA MATHIESON

Age: 14

Experience: Involved with mounted games for three years

Best results: Under 14 National Individual Champ 2017

Horse details: 20-year-old Copper (owned by the Eggings Family)

SALEM NOTTER

Age: 15

Experience: Involved with mounted games for five years.

Best results: Under 14 New Zealand Individual Champ 2016, Under 17 New Zealand Individual Reserve Champ 2017, Under 17 New Zealand Pair Reserve 2017, New Zealand Regional Champion Team 2016-2017

SKY NOTTER

Age: 17

Experience: Involved with mounted games for six years.

Best results: Holds 10 national titles – biggest being Open Triple Crown 2017 and Under 17 Triple Crown 2015

Horse details: 15-year-old, Polly

LEAH ZYDENBOS

Age: 16

Based: West Melton, Canterbury

Best results: Current Under 17 Individual and Teams National Champion

Horse details: Cheeky (owned by the Christensen Family) is a 16-year-old star in the world of mounted games. He has helped win 13 national titles and one world title.



VENUE INFORMATION

ASB SHOWGROUNDS
NEW ZEALAND'S PREMIER EVENTS AND EXHIBITION CENTRE



VENUE:

ASB Showgrounds, 217 Greenlane West, Epsom, Auckland

GETTING THERE:

PARKING

Parking is available across all days of EQUITANA Auckland at Alexandra Park (next door to the ASB Showgrounds, fees apply). Limited parking can be found on surrounding streets and on Puriri Drive.

Weekend parking will be available at the Greenlane Clinical Centre across the road from Gate 1. This is a Wilson Carpark and standard parking rates apply.

There is plenty of parking situated around ASB Showgrounds, and the adjacent football field.

GENERAL PUBLIC TRANSPORT OPTIONS

Frequent bus services run past the ASB Showgrounds – help reduce traffic congestion by taking a bus.

TRAVELLING FROM PT CHEVALIER AND ST HELIERS / GLEN INNES

Route 007 travels from Pt Chevalier via UNITEC, St Lukes, Greenlane, Glen Innes, St Heliers.

If travelling from Pt Chevalier, get off on Greenlane Road outside the ASB Showgrounds.

If travelling from St Heliers / Glen Innes, get off on Greenlane Road opposite the ASB Showgrounds.

TRAVELLING FROM AUCKLAND CITY / NEWMARKET

Departing from Britomart stop 7019 on Customs Street (outside Showgirls) approximately every 30 minutes.

Routes 327, 328, 334, 344, 347, 348 and 354 travel via Newmarket then along Manukau Road. Get off at the stop just before the intersection with Greenlane Road.

Departing from Midtown stop 7055 on Wellesley Street East approximately every 15 minutes Friday and Saturday and approximately every 30 minutes Sunday.

Routes 302, 304, 305, 312 and 315 travel via Newmarket then along Manukau Road. Get off at the stop just before the intersection with Greenlane Road.

OUTER LINK departs from Midtown stop 7086 on Wellesley Street West and stop 1096 on Wellesley Street East by Lorne Street approximately every 15 minutes, 7 days a week. Get off at the stop just after the intersection with Greenlane Road.

TRAVELLING FROM THE SOUTH

Selected bus services are available from Manukau City Centre, Mangere, Otahuhu, Papatoetoe, Onehunga and Royal Oak, travelling along Manukau Road as above.

You can check regular service times by using the Journey Planner.

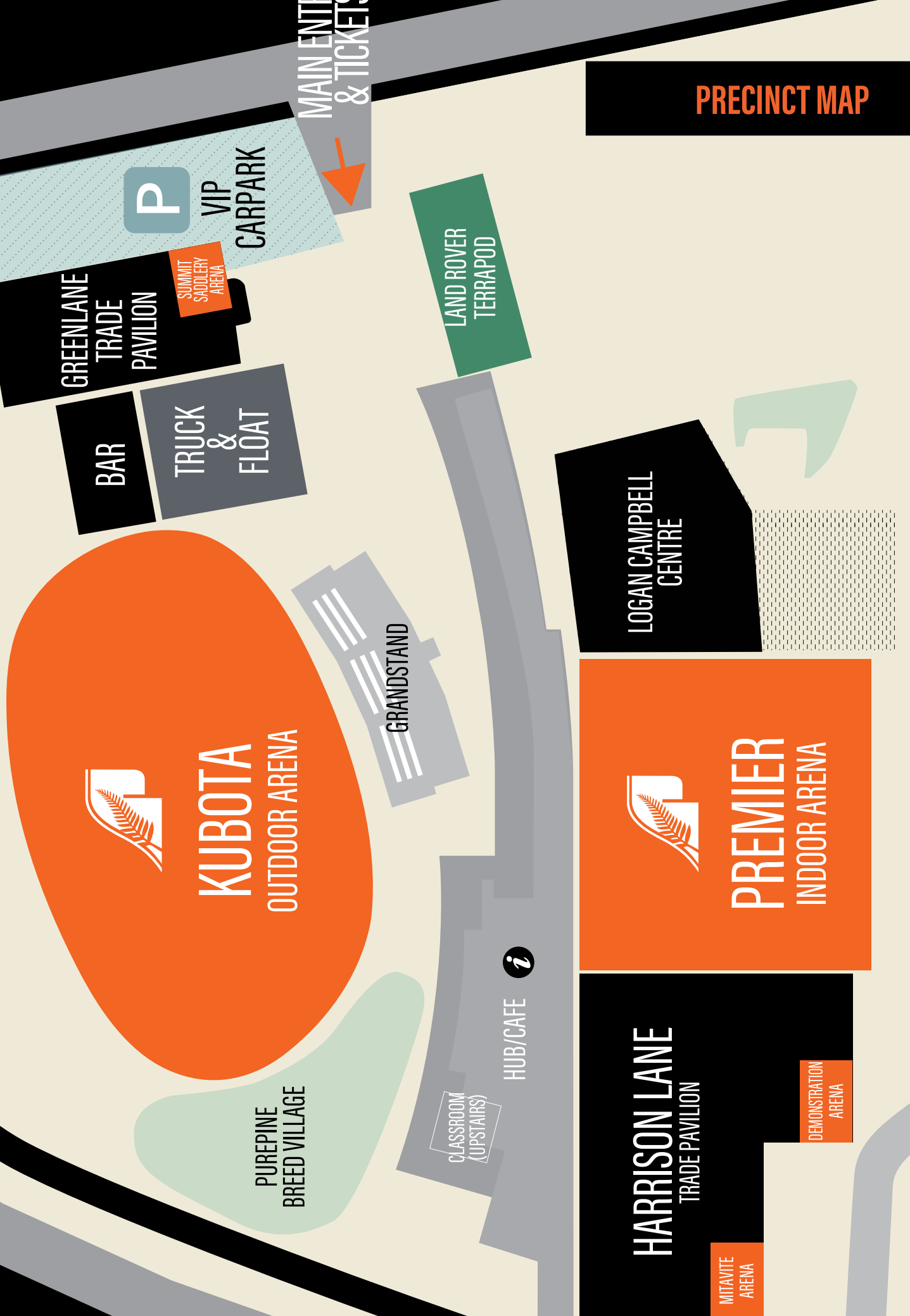
TRAVELLING BY TRAIN

The nearest train station is Greenlane, approximately 25-30mins walk to the ASB Showgrounds.

Info from www.maxx.co.nz on the route.



PRECINCT MAP



MAIN ENTRANCE
& TICKETS

P

VIP

CARPARK

GREENLANE
TRADE
PAVILION

SUMMIT
SADDLERY
ARENA

BAR

TRUCK
&
FLOAT

LAND ROVER
TERRAPOD

GRANDSTAND

LOGAN CAMPBELL
CENTRE



KUBOTA
OUTDOOR ARENA



PREMIER
INDOOR ARENA



HUB/CAFE

CLASSROOM
(UPSTAIRS)

PUREPINE
BREED VILLAGE

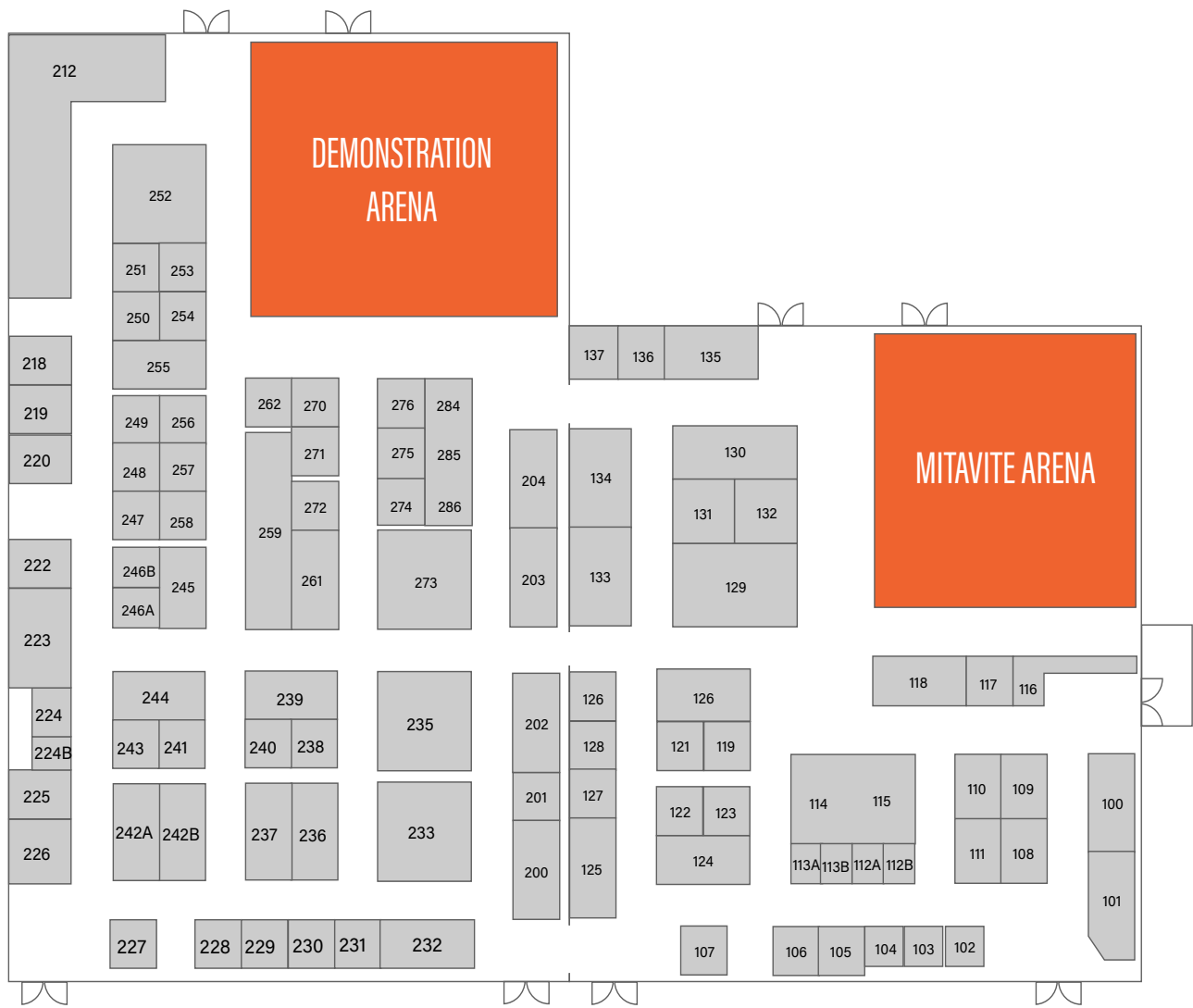
HARRISON LANE
TRADE PAVILION

MITAVITE
ARENA

DEMONSTRATION
ARENA

EXHIBITION PLAN

HARRISON LANE PAVILION



**TICKETS STILL
AVAILABLE**

WWW.EQUITANAACL.CO.NZ





EXHIBITION PLAN

GREENLANE PAVILION



EXHIBITORS



With over nine thousand square meters of indoor and outdoor exhibition space, EQUITANA Auckland prides itself on producing the largest shopping precinct of its kind in New Zealand.

Come rain, hail or shine you can shop in comfort throughout our extensive shopping halls where hundreds of equine and rural related businesses will be showcasing their products. There will be more than 100 companies offering you everything from tack and saddles, through to homewares and jewellery, trucks and floats as well as tractors and feeds. Get your yearly shopping done throughout three distinct areas: however make sure you allow plenty of time!

ADVENTURE HORSE TREKKING NZ

Harrison Lane Pavilion #254
36892838
ehorsetrekkingnz@farmside.co.nz
www.adventurehorsetrekking.co.nz

BETAVET LTD

Harrison Lane Pavilion #276
027 330 6332
Info@betavet.co.nz
www.betavet.co.nz

CEAT NZ LTD & WOW SADDLES

Harrison Lane Pavilion #274 & #275
021 0483 432
cotswold@ceatnz.com
www.ceatnz.co.nz

DYNAVYTE NZ LTD

Harrison Lane Pavilion #132
(021) 862 820
Jeremy@dynavYTE.nz
www.dynavYTE.nz

EDUCATOR HUB

Harrison Lane Pavilion #123
Sue@equineproductions.com.au

ALOE PURITEE

Harrison Lane Pavilion #112A
279626013
laboddy97@gmail.com
www.aloepuritee.fip.com

BIOPTRON LIGHT THERAPY

Greenlane Pavilion #608
021 981 089
Mirjana.arlov@gmail.co.nz
www.bioptron.com.au

CHEVAL LIBERTE

Harrison Lane Pavilion #255
021 08721127
cheval-libertenz@outlook.co.nz
www.chevalnz.com

EQUESTRIAN HUB

Harrison Lane Pavilion #121
Promote@equestrianhub.com.au
www.equestrianhub.com.au

ANIMALS THERAPUETICS ONLINE

Harrison Lane Pavilion #107
(0403)090550
info@animaltherapuetics.com.au
www.animaltherapuetics.com.au

BLISS OF LONDON

Harrison Lane Pavilion #271
07831 890 883
nicki@bliss-of-london.co.nz
www.bliss-of-london.co.nz

CWD SADDLERY/MUSTO/ FREE JUMP

Harrison Lane Pavilion #130
021 521 860
penny@pennystevenson.co.nz
www.pennystevenson.co.nz

EQUESTRIANA

Harrison Lane Pavilion #258
021 1970 124
Equestriana@clear.net.nz
www.equestriana.nz

ARION EFV

Harrison Lane Pavilion #250 & #251
09 238 4555
Paul@arionefv.co.nz
www.arionefv.co.nz

BOECKMANN NZ LTD

Harrison Lane Pavilion #114 & #115
07549 2383
robert@boeckmann.co.nz
www.boeckmann.co.nz

DAVID AND SANDI SIMONS TRAINING

Harrison Lane Pavilion #239
Sandi@davidsimons.com.au
www.davidsimons.co.nz

EQUINE VIT & MIN

Greenlane Pavilion #615
0418 733 298
Sharon@equinevitmin.com
www.farmalogic.com

AUCKLAND MINIATURE HORSE CLUB

PUREPINE Breed Village
www.amhc.co.nz

BOTANICA INTERNATIONAL LTD

Harrison Lane Pavilion #272
0044 (0) 28 4173 9151
enquiries@botanica.ie
www.botanica.ie

DIAMOND GRID NZ

Harrison Lane Pavilion #245
021 465 019
Nz@diamondgrid.com
www.diamondgrid.com

EQUINOLOGY NEW ZEALAND

Harrison Lane Pavilion #241
(02) 4998 3149
Info@equinologyaustralia.com.au
www.equinebodyworks.com.au

AUSTRALIAN STOCK HORSE SOCIETY

PUREPINE Breed Village
www.ashs.com.au

CALM HEALTH HORSES

Harrison Lane Pavilion #118
03 312 5567
info@calmhealthyhorses.com
www.calmhealthyhorses.com

DOTERRA ESSENTIAL OILS

Greenlane Pavilion #608
021 641 926
Ktewen@me.com
www.mydoterra.com/katherinewen

EQUISENSE MOTION

Harrison Lane Pavilion #126
Contact@equisense.fr
www.equisense.co.nz

BASILUR TEA

Harrison Lane Pavilion #104
022 627 8527
Natalia.e.dudko@gmail.com
www.basilurtea.co.nz

CAMBRIDGE EQUESTRIAN

Harrison Lane Pavilion #203
07 827 4453
sales@equestrianelegancenz.com

DROMGOOL HORSEMANSHIP

Harrison Lane Pavilion #111
027 483 3136
info@horseman.co.nz
www.horseman.co.nz

EQUISOL NZ

Greenlane Pavilion #613
027 600 6430
Kym@equisolnz.co.nz
www.equisolnz.co.nz

BELPARD AUSTRALIA PTY LTD

Harrison Lane Pavilion #227
0407 317 791
Jarrod@belpard.com.au
www.belpard.com.au

CAMBRIDGE GRAIN

Harrison Lane Pavilion #202
07 827 4453
info@cambridgegrains.co.nz
www.cambridgegrains.co.nz

DUNSTAN NUTRITION LTD

Harrison Lane Pavilion #244
07 849 8160
Dunstan@dunstan.co.nz
www.dunstan.co.nz

EQUISSAGE THERAPY NZ

Harrison Lane Pavilion #120
0800 642 4272
Kylie.ebbert@equissage.co.nz
www.equissage.co.nz



@EQUITANAACL #EQAKL



/equitanaacli #THEEQUINEWORLDISHERE



EQUITANA AUCKLAND 2017 | PAGE 40

FG REYNOLDS EQUESTRIAN

Harrison Lane Pavilion #220
2722 07556
Jenny@fgr.co.nz
www.fgr.co.nz

HAURORA HONEY

Harrison Lane Pavilion #112B
04 976 5686
Info@haurorahoney.co.nz
www.haurorahoney.co.nz

HR FISKIN & SONS

Greenlane Pavilion #617
09 238 9414
Info@hrfiskin.co.nz
www.hrfiskin.co.nz

KAIMANAWA HERITAGE HORSES

Harrison Lane Pavilion #106
274 509 047
Kimberb@xtra.co.nz
www.kaimanawaheritagehorses.org

FABIRC CARE

Harrison Lane Pavilion #128

Info@fabircare.com.au

HAWKES BAY EMBROIDERY & PRINT

Harrison Lane Pavilion #101
06 843 4338
Emily@hbembroid.co.nz
www.hbembroid.co.nz

EQUITANA
EVENT
PARTNER

IMHR INC.

Harrison Lane Pavilion #256
0419 215 307
Office@imhr.com.au
www.imhr.com.au

KRAKA FUDGE

Harrison Lane Pavilion #113A
021 767 686
Info@krakafudge.nz
www.krakafudge.nz

FOUNTAIN CITY SADDLERY

Harrison Lane Pavilion #125 & #127
0508 723 353
Info@saddleryshop.co.nz
www.saddleryshop.co.nz

HEALTHY PET FOODS

Harrison Lane Pavilion #222
021 552 830
Office@healthypetfoods.co.nz
www.healthypetfoods.co.nz

INTERNATIONAL ANIMAL HEALTH PRODUCTS

Harrison Lane Pavilion #237
0275 232 181
Kbeatson@iahp.com.au
www.iahp.com.au

KUBOTA

Outdoor
027 445 9168
ian.massicks@norwood.co.nz
www.kubota.co.nz

EQUITANA
EVENT
PARTNER

FOUNTAIN SADDLERY

Greenlane Pavilion #618

HERITAGE EQUINE NZ

Harrison Lane Pavilion #262 & #270
(028) 8500 0477
Rgradowskismith@xtra.co.nz
www.heritageequine.com

INTERPATH PTY LTD / 4CYTE

Harrison Lane Pavilion #249
61 458 260 478
Sales@interpath.net.au
www.4cytevet.com

LAND ROVER

Outdoor
info@jaguarlandrover.co.nz

EQUITANA
EVENT
PARTNER

GALLAGHER

Harrison Lane Pavilion #117
0800 731 500
Cs@am.gallagher.com
www.gallagher.com

HI FORM AUSTRALIA PTY LTD

Harrison Lane Pavilion #239
enq@hiform.com.au
www.hiform.com.au

EQUITANA
EVENT
PARTNER

IRT

Outdoor
027 523 2181
Tsmith@irt.com
www.irt.com

LIQUORICE DELIGHTS & POPPED

Harrison Lane Pavilion #104
021 169 4609
Sales@liquoricedelights.co.nz
www.liquoricedelights.co.nz

GLOBETROTTER PTY LTD

Harrison Lane Pavilion #243
0061 4388 51981
Kate@globetrotting.com.au
www.globetrotting.com.au

HORSE FIT NZ

Harrison Lane Pavilion #225
09 216 3665
Gillianm@horsefit.co.nz
www.horsefit.co.nz

JLT BLOODSTOCK

Harrison Lane Pavilion #201
07 8233 8773
Jane.mcalpine@jlt.co.nz
www.horseinsurance.co.nz

MAGNUM INDUSTRIES

Harrison Lane Pavilion #253
07 847 5566
Michelle@magnum.co.nz
www.magnum.co.nz

GSA TRADERS PTY LTD

Harrison Lane Pavilion #122

Sales@gsatraders.com.au
www.gsatraders.com.au

HORSE GIFTS NZ

Harrison Lane Pavilion #200
06 875 0955
Jackie@horsegifts.co.nz
www.horsegifts.co.nz

JOHN LYONS

Harrison Lane Pavilion #236
Jody@johnlyons.com
www.johnlyons.com

MARCUS OLDHAM

Harrison Lane Pavilion #224
0437 465 690
Marketing@marcusoldham.vic.edu.au
www.marcusoldham.vic.edu.au

HANSEN PRODUCTS

Harrison Lane Pavilion #136
09 265 1540
Info@hansenproducts.com
www.hansenproducts.com

EQUITANA
EVENT
PARTNER

HORSELANDS

Greenlane Pavilion #623
61 412 546 362
Kumeu@horselands.co.nz
www.horselands.co.nz

JUMP FOR JOY

Harrison Lane Pavilion #134
(027) 2731 760
nigel@mccoord.net.nz
www.showjumps.co.nz

MARION LE FEUVRE

Harrison Lane Pavilion #118
021 317 890
marionlefeuvre@outlook.com

HARRISON LANE

Harrison Lane Pavilion #237
09 947 9178
Laurad@harrisonlane.co.nz
www.harrisonlane.co.nz

EQUITANA
EVENT
PARTNER

HORSE MATE-HAYGAIN

Harrison Lane Pavilion #135
61 412 546 362
Carolyn@pelletmate.com.au
www.pelletmate.com.au

JUMP-A-BULL

Harrison Lane Pavilion #231
021 2509 076
Jumpabull@xtra.co.nz

EQUITANA
EVENT
PARTNER

MITAVITE

Harrison Lane Pavilion #129
027 2413 191
Kbruce@ingham.com.au
www.mitavite.com.au

EQUITANA
EVENT
PARTNER

EXHIBITORS



MOORES RIDING WEAR LTD

Harrison Lane Pavilion #228
 (03) 313 6116
 Mac-clan5@xtra.co.nz
 www.mooresridingwear.co.nz

PHILL MADDOX SADDLES

Harrison Lane Pavilion #223
 09 412 2326
 Maddoxnz@xtra.co.nz
 www.maddoxequestrian.co.nz

STIRRUPS

Harrison Lane Pavilion #273
 210 333 964
 Info@stirrups.co.nz
 www.stirrupsnz.com

ULTIMATE OE

Harrison Lane Pavilion #137
 022 697 6007
 Ultimateemail@gmail.com
 www.ultimateo.co.nz

NEW STYLE DIRECT

Harrison Lane Pavilion #218
 61 3 9489 117
 Enquiries@newstyledirect.com.au
 www.newstyledirect.com.au

POSH PONIES

Harrison Lane Pavilion #113B
 021 064 9385
 Wattledownfarm@hotmail.com

SUMMIT & GRAIN SADDLERY

Greenlane Pavilion #612
 0800 282 333
 office@summitsaddlery.co.nz
 www.summitsaddlery.co.nz

VANI-VETERINARY & NUTRITIONAL INTEGRATION LTD

Greenlane Pavilion #610
 021 563 272
 Nikita@vani.nz
 www.vani.nz

NGA TAWA DIOCESAN SCHOOL

Harrison Lane Pavilion #119
 (06) 327 4810
 bursar@ngatawa.school.nz
 www.ngatawa.school.nz

PRESTIGE EQUESTRIAN LTD

Harrison Lane Pavilion #247
 021 064 9385
 sales@prestigequestrian.co.nz
 www.prestigequestrian.co.nz

SYNCROFLEX

Harrison Lane Pavilion #274 & #275
 021 356 511
 info@syncroflexha.com
 www.syncroflexha.com

VETERINARY ASSOCIATES EQUINE & FARM

Harrison Lane Pavilion #248
 021 998 017
 jenny@vetassociates.co.nz
 www.vetassociates.co.nz

NICHOLSON IMPORTS

Harrison Lane Pavilion #124
 0274 905 245
 nicholsonimports@xtra.co.nz

SADDLERY WAREHOUSE

Harrison Lane Pavilion #233 & #235
 0508 467 734
 Sales@saddlerywarehouse.co.nz
 www.saddlerywarehouse.co.nz

THE BRIDLE BUFFET

Harrison Lane Pavilion #132
 021 545 301
 thebridlebuffet@gmail.com
 www.thebridlebuffet.com

VETPRO

Harrison Lane Pavilion #204
 09 412 6466
 Tracey@vetpro.co.nz
 www.vetpro.co.nz

NZ COLLEGE OF CHIROPRACTIC

Greenlane Pavilion #614
 021 450 284
 Katie.pritchard@nzchiro.co.nz
 www.nzchiro.co.nz

SCOOT BOOTS

Harrison Lane Pavilion #242B
 0412 026 531
 Annette@scootboots.com
 www.scootboots.com

THE CAMBRIDGE COLLECTION

Harrison Lane Pavilion #130
 782 755 77
 theteam@thecambridgecollection.co.nz
 www.thecambridgecollection.co.nz

WADE EQUINE GROUP

Harrison Lane Pavilion #212
 07 979 647
 Alyssa@wadegroup.co.nz
 www.wadegroupltd.co.nz

NZ HORSE & PONY MAGAZINE

Harrison Lane Pavilion #131
 0800 213 498
 editor@horseandponymag.com
 www.horseandponymag.com

EQUITANA
 EVENT
 PARTNER

SHOWGIRL EQUESTRIAN

Harrison Lane Pavilion #257
 0438120947
 beth@showgirlquestrian.com.au
 www.showgirlquestrian.com.au

THE WAY OF THE HORSE

Greenlane Pavilion #609

WAIKATO EQUINE VETERINARY CENTRE

Harrison Lane Pavilion #230
 021 862 614
 Michelle@wevc.co.nz
 www.wevc.co.nz

OMEGA FEED

Greenlane Pavilion #617
 09 328 9414
 Jodi@omegafeeds.com.au
 www.omegafeeds.com.au

SISTACO

Harrison Lane Pavilion #246
 0400 807 207
 Yolanda.may@sistaco.com
 www.sistaco.com

THOROUGHbred FLOATS

Harrison Lane Pavilion #259
 09 236 8175
 Sales@thoroughbredfloats.co.nz
 www.thoroughbredfloats.co.nz

WATERBOY NZ LTD

Outdoor
 021 436 177
 Mark@waterboy.nz
 www.waterboy.nz

PERFORMA RIDE

Harrison Lane Pavilion #242A
 0416 559 314
 Hello@performaride.com.au
 www.performaride.com.au

SOUTHERN STARS SADDLERY

Harrison Lane Pavilion #284, #285 & #286
 0418 947 321
 Kelvinf@arach.net.au
 www.southernstarsaddlery.com.au

TUBBEASE

Harrison Lane Pavilion #229
 07 827 3902
 Sales@shoof.co.nz
 www.shoof.co.nz

WILLIAMS TACK AND FEED

Harrison Lane Pavilion #133
 Info@williamstackandfeed.co.nz
 www.williamstackandfeed.co.nz

PIRONGIA CLYDESDALES

PUREPINE Breed Village
 09 412 2326
 pirongia.clydesdales@xtra.co.nz

SPURS OF COUNTRIES

Harrison Lane Pavilion #109 & #110
 09 239 0625
 info@topnotcheg.com
 www.spurs.co.nz

TUFFROCK NZ/ HORSE TRACK NZ

Greenlane Pavilion #611
 09 437 5304
 Xpanz@actrix.co.nz
 www.tuffrock.co.nz

WILSON SISTERS

Harrison Lane Pavilion #116



@EQUITANAACL #EQAKL



/equitanaaakl #THEEQUINEWORLDISHERE



EQUITANA AUCKLAND 2017 | PAGE 42

EQUESTRIAN DESIGN & CONSTRUCTION



STABLES, BARN & COMMERCIAL EQUESTRIAN FACILITIES



COMPLETE PROJECT MANAGEMENT



CUSTOM DESIGNED & BUILT TO SUIT EACH INDIVIDUAL REQUIREMENT

Contact Laura Daly

M: 021 722 578

E: laurad@harrisonlane.co.nz

View our Online Portfolio

W: harrisonlane.co.nz



HARRISON LANE

EQUESTRIAN DESIGN AND CONSTRUCTION

COUPONS

Make sure you get the most out of your retail therapy with these **EQUITANA Auckland Coupons**.

Each coupon is designated to a certain exhibitor with an **EQUITANA Auckland** promotion for you to take advantage of. There are hundreds of dollars to be saved so make sure you bring your coupons to each site to redeem the special!



SITE #131

Subscribe to NZ Horse & Pony magazine, and receive a gift from Bayer Animal Health PLUS be in the draw to WIN a 5-day trek for two, valued at \$7000!



SITE #132

\$10 off any purchase over \$250



SITE #107

Order Activo-Med Combi Pro, BONUS Leg Wraps - save \$2000!



SITE #132

Visit us and quote Dynavite NZ to get a 15% Discount on any purchase



SITE #114 + #115

Free Boeckmann saddle blanket with every horse float sold at EQUITANA.



SITE #133

Present this coupon to receive 15% off RRP for one pair of B//Vertigo breeches!



SITE #117

Spend \$300 on Gallagher product and receive a FREE Live Fence Indicator.



SITE #200

FREE pair of Indigo Stallion Boot Socks valued at \$16 with any purchase at EQUITANA over \$80.



SITE #120

Book a Free Demonstration & go in the draw to WIN an Equissage Hand Unit AND \$10,000!!



SITE #201

\$20 off for a new insurance policy taken out during EQUITANA



SITE #126

Free saddle blanket valued at \$80 with every purchase



SITE #202

Visit stand 202 and go into the draw for a giftpack



SITE #203

Go into the draw to win a giftpack



SITE #257

Showgirl Equestrian is delighted to offer EQUITANA Auckland attendees 20% off full price purchases.



SITE #228

\$100.00 discount on all Short Jackets includes Stretch and Non Stretch. \$150.00 discount on Stretch Dressage Tail



SITE #273

10% off clothing items at EQUITANA Auckland



SITE #232

\$10 off a 10kg Livermol



SITE #276

Free BuildaGut 500gm, 200ml of Prepare or BetaVet pastes of choosing (GG Calm SuperBoost Electrolift) with purchases(whilst stocks last!)



SITE #242A

Performa Ride will be offering a FREE belt to the first 20 customers every day



SITE #284

Be one of the first FIVE visitors to our stand each day and receive a FREE Southern Stars Saddlery Baseball Cap.



EQUITANA AUCKLAND EQ AKL



SITE #608

Purchase a Biopton light & receive a \$200 rechargeable hand massager



SITE #250

Visit our stand and enter the draw to win A Fleck Whip valued at \$275.00



SITE #610

Vani to receive 20% off all packages, farm visits and services. Only for packages purchased at EQUITANA or for a farm visit or service booked at EQUITANA



SITE #253

Visit stand 253 with \$10 off an Magnum product



SITE #613

15% off purchase



SITE #614

Visit us at stand 614 & receive a complimentary spinal assessment



SITE #623

Spend \$150 and get a free Effol shampoo or conditioner valued at \$30



SITE #617

Visit stand 617 & go into the draw to win a daily prize of Omega Feed Rug or Saddle Cloth

WATERBOY[®]
PORTABLE OUTDOOR WASHER

SITE #(24)3 X 5

\$50 off any Waterboyunit (reg trademark symbol) or \$75 off the Porta Hot (reg trademark symbol)




KUBOTA THIS IS THE LIFE



2010
2017
2018

Kubota
Forty Years in New Zealand

 kubota.co.nz





PUREPINE
SHAVINGS

BREED VILLAGE

The PUREPINE Breed Village gives you the opportunity to view and speak to the owners of some of the most beautiful and diverse horses that New Zealand has to offer.

The PUREPINE Breed Village will give you the chance to get up close and personal with each breed in an open and friendly environment where all your questions concerning breeding, bloodlines and temperament can be explained by knowledgeable individuals and groups. There will also be individual and group breed displays, so you can see the horses in action!

INTERNATIONAL EDUCATORS

EQUITANA is well known for bringing together the very best and largest range of local and international educators under one roof. It is horsey heaven for those keen to expand their knowledge or be inspired.

EQUITANA Auckland has an amazing array of educators right in the heart of the city across four fantastic days.

Our educators come from across the globe and will be covering a wide range of topics from veterinary care, fitness, nutrition, discipline-specific issues, horse bio-mechanics, saddle fitting, psychology and general care. Added to that are special sessions with our Star Presenters Andrew Nicholson, Jonny Hilberath and John Lyons, along with our talented IRT The Way of The Horse competitors.

DR. SARA BAGHERI | NEW ZEALAND

Sara graduated from the Royal Veterinary College, London, in 2006 and completed postgraduate training in Western Veterinary Acupuncture and Chiropractic. Sara's veterinary passions are animal wellness and welfare and performance, education of riders, owners, trainers and integration of animal health care professionals.

www.zoominals.com



LARISSA BILSTON | AUSTRALIA

Larissa Bilston (B.AgrSc) is an owner and works as the Nutritionist for Farmalogic, where she developed Equine Vit&Min. She has worked as an animal nutritionist helping feed mills, trainers, riders and owners to provide horses with cost-effective, scientifically balanced rations designed to cater for individual requirements.

www.equinevitmin.com



LINDSAY COOK | NEW ZEALAND

Lindsay Cook is an accomplished Clinical Hypnotherapist with more than 30 years' experience. Open Minds Equestrian Sports Performance has supported riders and coaches at all levels to achieve their dreams and ambitions. An experienced trainer and facilitator in Executive Coaching, Lindsay also runs SafeTech her Health & Safety consultancy.

www.lindsaycook.net



LAURA DALY | NEW ZEALAND

Laura's experience and knowledge of the equestrian industry enables her to work with clients to achieve their dreams. Her specialist knowledge makes her an excellent consultant on the construction of customised stables, arenas and rural barns, all designed to fulfill a clients requirements.

www.harrisonlane.co.nz



DR. LEIGH DE CLIFFORD | NEW ZEALAND

Leigh is a member of the MVS Equine Division at Matamata Veterinary Services. Leigh graduated from Massey in 2008 and worked in a large equine hospital in western Victoria before taking up a position as the private veterinarian for Qatar Bloodstock and Qatar Racing.

www.matamatavets.co.nz



JANE & KEN DROMGOOL | NEW ZEALAND

Jane and Ken are a unique husband and wife coaching duo. With a combined 75 years experience in the equestrian industry they have an unparalleled depth of experience. They are extremely passionate about creating safety for both horse & rider and teach others to create safe, fun and effective relationships.

www.horseman.co.nz



AMANDA EDWARDS | AUSTRALIA

With a background in emergency trauma nursing Amanda has written a book on first aid and emergency response for horse owners. Amanda is on a mission to give horse owners the skills and confidence to care for their horse effectively when things go wrong.

www.equinecareclinic.com



ANTOINETTE FOSTER | AUSTRALIA

Antoinette is one of Australia's most highly qualified equine nutritional therapists and is a qualified medical herbalist and human nutritionist. A practitioner for over 29 years her aim is to provide horse owners, trainers and breeders with the tools to ensure that their horses achieve optimum health on a long term basis.

www.hiform.com.au



@EQUITANAACL

#EQAKL



/equitanaaakl

#THEEQUINEWORLDISHERE



EQUITANA AUCKLAND 2017 | PAGE 48

INTERNATIONAL EDUCATORS

FENELLA GRIGSBY | NEW ZEALAND

Fenella's qualifications have enabled her to pursue a career in sports therapies for humans & animals. She has worked with talented riders and horses at the top end of their game, ranging from World Cup & Grand Prix, Eventing NZ team horses through to those at grassroots.

www.ceatnz.com



WAYNE HIPSLEY | USA

A life-long horseman Wayne has been a licensed judge with the United States Equestrian Federation for over 40 years. Academic degrees in Agriculture qualified him to serve as a Professor of Equine Studies and he is still a member of the University of Findlay's Equestrian Advisory Committee.

www.equineconsulting.com



JODY HARTSTONE | NEW ZEALAND

Jody Hartstone is an internationally accomplished Dressage rider and has been at the top of the sport for many years. Jody's current Grand Prix horse, the Lusitano stallion, Ali-Baba, has a large fan base across the world. Jody coaches all around the world. She specialises in teaching the science of Learning Theory and holds a Diploma in Equitation Science.

www.hartstoneequestrian.com



PETER HOROBIN | AUSTRALIA

Peter has spent many years educating himself on saddle fitting and equine biomechanics. As a saddle manufacturer he leads the way in new dimensions of engineering and design. An expert in saddle fitting, Peter endeavours to educate riders about the simple and effective tools which can be used at home to recognise incorrect saddle fit.

www.horobin.com.au



CAROL HERDER | CANADA

International Best Selling Author and President of Cavallo, Herder shares the benefits of natural horse care, the two most vital hoof functions and the six keys of a successful barefoot programme. She delivers her teachings with reliable authenticity that is easy to incorporate into your daily horse care routine.

www.cavallo-inc.com



DAVID JONES-PARRY | NEW ZEALAND

David's involvement in the Equestrian Industry spans over 40 years, from a young age riding, competing and instructing to working for a major equestrian distribution company. A qualified saddle fitter, a member of the Society of Master Saddlers and of the British Equestrian Trade Association. David lectures on the Australasian Saddle Fitters Association Course and runs a small boutique saddle fitting business.



RUSSELL HIGGINS | NEW ZEALAND

Russell has been teaching horsemanship clinics and starting horses professionally since 1999. Russell has taught in 16 countries and 'started' young horses on three continents and had horsemanship articles published in a number of magazines.

www.russellhigginsnz2extra.co.nz



THORSTEN KAISER | NEW ZEALAND

Thorsten is one of the first Holistic Hoofcare professionals in New Zealand. He offers barefoot hoofcare, seminars, professional training and one-on-one coaching. He is a regular speaker at the World Holistic Hoofcare Conference which has been run since 2003 in a number of different countries.

www.ibem.co.nz



JASON HILL | NEW ZEALAND

Jason's career in the equine and fitness industry began in 2007 with the desire to understand more about equestrian rider fitness. Study and training led to Jason opening a studio in Auckland and he now runs programs and training systems for groups of riders from all areas of the equine world.

www.equestrifit.co.nz



MARK KENZIG | AUSTRALIA

Mark is one of Australia's leading show horse trainers and riders with his own stables, enjoying success at the most elite shows across Australia. A specialist in show preparation, producing and training Mark is a Royal Listed SHC Judge and EA National Saddle Horse Judge.



INTERNATIONAL EDUCATORS

TODD MCCORMICK | USA

Texas born & bred, Todd is a Professional Horse Trainer located in Tatura, Victoria. Todd fell in love with the western ranch horse as a youth & began riding reiners with Tim McQuay USA. Todd is one of the first clinicians to hold a Ranch Riding Clinic in Australia.



JENNY PATERSON | NEW ZEALAND

Jenny's BSc in Zoology provided a scientific background which has aided her research into the causes of diet related issues caused by the grazing of New Zealand grasses. Combining this with knowledge gained over her Horsemanship career, Jenny has been able to explain many of the problems that horse owners encounter.

www.calmhealthyhorses.com



TANJA MITTON | AUSTRALIA

Tanja Mitton grew up in Germany with a passion for horses and show jumping. Tanja is now a neuro-linguistic programming (NLP) master coach and practitioner, author and presenter and has worked as a Mindset Coach for the Australian High Performance Dressage & Para squads.

www.tanjamitton.com



VERA PAYNE | AUSTRALIA

In 2015, at the Vienna SCENAR conference, the Inventors and Manufacturers of the SCENAR Medical Technology presented Vera with a gold medal of achievement. Her success in treating horses using the SCENAR technology allowed her to be sought after for treatments of horses with issues that vets were having difficulty addressing.

www.equinescenar.com.au



NZ MOUNTED RIFLES | NEW ZEALAND

The New Zealand Mounted Rifles Charitable Trust provides communities and individuals with the opportunity to share, remember and participate in a unique part of New Zealand's history that may otherwise be lost. The NZMR Charitable Trust is raising funds for the treatment of military induced post-traumatic stress disorder.

www.NZMRCT.com



ROZZIE RYAN | AUSTRALIA

Rozzie is an Equestrian Australia NCAS Level 3 Dressage Coach, has represented Australia in dressage at World Equestrian Games and World Cups. Rozzie and her fabulous horse, Stirling Wilton, were part of the first Australian Dressage Team to travel overseas to the World Equestrian Games in Stockholm, Sweden in 1990.

www.ryanshorses.com.au



BRETT PARBERY | AUSTRALIA

Brett has been riding and coaching dressage professionally for around 20 years. He has won multiple Australian Dressage Championships, been short-listed for 3 Olympic Games and has achieved a top 10 World Equestrian Games finish.

www.brettparbery.com.au



DAVID SIMONS | AUSTRALIA

From David's lifelong involvement with horses he believes that a horse at any stage of its life and from any background can be trained in a non-threatening way, to promote calmness and responsiveness. David's core techniques create the building blocks for a connected and well balanced ride.

www.davidsimons.com.au



SUE PARKER | AUSTRALIA

Sue developed the EBT S.T.A.R.T. program (Soft Tissue Assessment and Response Testing), a unique system of carrying out systematic and sequential assessment check that provide specific indicators to soft tissue injuries. It enables early detection before a general soreness becomes a long term injury.

www.equinebodytherapy@bigpond.com



SANDI SIMONS | AUSTRALIA

Using her own experiences and unique style, Sandi has helped hundreds of women regain the confidence to get back in the saddle while enjoying a safe and harmonious relationship with their horses. Sandi is now providing a training system that has been lacking for those that struggle within the equine world.

www.sandisimons.com.au



@EQUITANAACL

#EQAKL



/equitanaaakl

#THEEQUINEWORLDISHERE



EQUITANA AUCKLAND 2017 | PAGE 50



NIKITA STOWERS | NEW ZEALAND

Nikita has been working full time in the Equine Industry since 2008 when she commenced her post-graduate studies and research in Equine Nutrition. She has a wealth of experience in putting together individualised feeding programmes for both race and performance horses.

www.vani.nz



PHIL WEBB | AUSTRALIA

Phil Webb's involvement with cutting started in 1976 with training and showing cutting horses as well as reined cow horse events. Phil first joined the NCHA Board in 1978; and is currently a director of the NCHA sitting on the major shows, judging and rules committees.



GRETEL WEBBER | NEW ZEALAND

Gretel has an Assoc.Dip. in Applied Science, a Marketing Degree and a Masters in Equine Science. Gretel has been working in the Horse Feed Industry for over 20 years. She gained a vast amount of experience working 'in the field' in her formative years and therefore enjoys liaising with owners and their horses to find feeding solutions that ensure optimum equine health and performance.

www.dunstan.co.nz



DR. LUKE WELLS-SMITH | AUSTRALIA

Dr Luke Wells-Smith is an equine veterinarian and farrier. Luke conducts lameness examinations and diagnostics. Luke's particular interests lie in the biomechanics of the horse, specifically the hoof and the rehabilitation of the laminitic horse.



GEORGIA WORTH | NEW ZEALAND

Georgia decided to pursue the field of Equine Dentistry after working as a dressage rider at Grand Prix level and competing locally in NZ, as well as in Australia and Germany. As a Qualified Equine Dental Technician, Georgia approaches her field of Equine Dentistry with the interest of applying her knowledge to improve horses performance and wellbeing.

www.equinedentalcare.co.nz



EDUCATOR HUB

Come and meet the educators from your favourite sessions and further discuss their topics. This is your chance to get all your questions answered personally by some of EQUITANA Auckland's International Educators at the Educator Hub.

Refer to the website for schedule.

EQUITANA WOULD LIKE TO THANK OUR PARTNERS

PREMIER EVENT PARTNERS:



ABOVE & BEYOND



EVENT PARTNERS:



AINSLEY POLO



Make a Difference



EVENT SUPPORTERS:

- ASB SHOWGROUNDS
- NZ THOROUGHBRED RACING
- INTERNATIONAL THOROUGHBRED RETIREMENT
- NZ SHOW HORSE COUNCIL
- LAND ROVER NZ POLO OPEN
- AUCKLAND MINIATURE HORSE CLUB
- NZ CARRIAGE DRIVING ASSN
- ESNZ
- PIRONGIA CLYDESDALES

THANK YOU TO ALL THE VOLUNTEERS, ORGANISATIONS AND
SUPPORTERS WHO HAVE CONTRIBUTED TO THE SUCCESS OF
EQUITANA AUCKLAND